

JAN 17 1996

COMMISSION

LAND CORNER RECORDATION CERTIFICATE

Filing Requirement of Act 74, Mich. P.A. 1970 LIBER 4 PAGE 189

For corners in ST. JOSEPH (County)

Located In:

Corner Code #

FLOWERFIELD TWP.

Table with 3 columns: Description, Township/Range/Section, and Corner Code #. Includes entries for Public Land Survey, Property Controlling in Section, and Miscellaneous Property in Section.

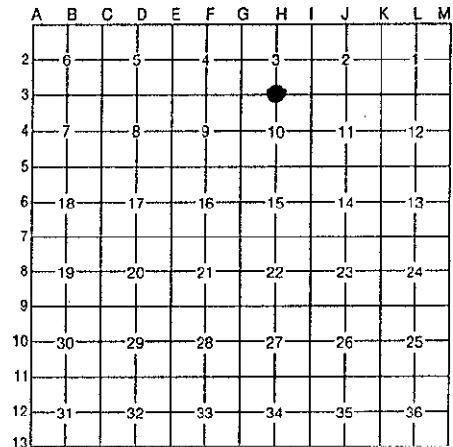
STATE OF MICHIGAN ST. JOSEPH COUNTY FILED

30 OCT 95 8:14 A.M.

CYNTHIA JARRATT REGISTER OF DEEDS

Register of Deeds Stamp & File Number

- 4. Lot No. , Recorded Plat
5. Private Claims



I, WAYNE A. MOSTROM, in a field survey on SEPTEMBER 19, 19 95, do hereby certify that under requirements of P.A. 74, Michigan P.A. of 1970, the corner points mentioned in lines 1 and 2 above were in conformance with regulations and rules therefore as required in the current manual of survey instructions of the United States Department of the Interior, Bureau of Land Management or by a decree of a Court of Law and/or that the corner points mentioned in lines 3, 4 and 5 above were in conformance with the rules of the Michigan Board of Professional Surveyors or by a Decree of a Court of Law; established, re-established, monumented, re-monumented, recovered, found as expressed below:

NOTE: Not more than 4 corners, all in the same town and range, may be recorded on this certificate.

A. Description of original monument and accessories and/or subsequent restoration:

1878 SURVEY BY N.S. ANDREWS
STONE SET FROM ORIG. BEARINGS BY GARDNER
8" HICK. = N81°W 73 LKS

1984 SURVEY BY W. MOSTROM
FOUND STONE UP HIGH IN RDWY, IN FENCE TO EAST, IN DANGER OF BEING GRADED OUT
SET IRON BAR IN PLACE OF STONE
12" HICK. = N66°W 36.21, 24" WALNUT = EAST 31.7'
36" OAK = S45°W 40.9'
24" WALNUT = EAST 31.7'
R.R. TIE POST = WEST 38.9'

B. Description of corner evidence found and/or method applied in restoring or reestablishing corner:

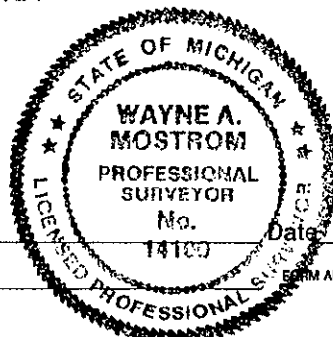
FOUND BAR CAPPED #14100 IN FENCELINE TO EAST
12" HICKORY = N66°W 36.21'
36" OAK = S45°W 40.9'
R.R. TIE POST = WEST 38.9'
24" WALNUT = EAST 31.7'

RATIFIED BY PEER GROUP IN ACCORDANCE WITH P.A. 348 ON Oct-23, 1995 Wagon CO. REPRESENTATIVE

C. Description of monument for corner and accessories established to perpetuate locating the position of the corner:

REPLACED IRON FOUND WITH 5/8" X 24" BAR W/STD. CAP IN MON. BOX
N & W IN N. SIDE 24" WAL. = EAST 31.70
N & W IN S. SIDE RR TIE A.P. = WEST 38.90
N & W IN NW SIDE 36" OAK STUMP = S45°W 40.90'
N & W IN NE SIDE 14" HICK. = N66°W 36.21'
COR. IS IN FENCELINE TO EAST & WEST

Signed by [Signature]
Surveyor's Michigan License No. 14100



Date: 10/27/95

REMONUMENTATION

LIBER 4 PAGE 189

50th 10/10/95