

JAN 17 1996

LAND CORNER RECORDATION CERTIFICATE

Filing Requirement of Act 74, Mich. P.A. 1970

LIBER 4 PAGE 187

For corners in COMMISSION

ST. JOSEPH (County)

Located In:

Corner Code #

FABIUS TWP.

- 1. Public Land Survey T 6 S R 12 W G-5
2. Property Controlling in Section S T R
3. Miscellaneous Property in Section S T R

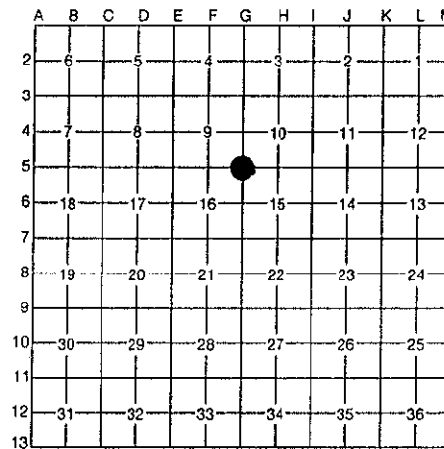
STATE OF MICHIGAN ST. JOSEPH COUNTY FILED

30 OCT 95 8:10 A.M.

CYNTHIA JARRATT REGISTER OF DEEDS

Register of Deeds Stamp & File Number

- 4. Lot No. , Recorded Plat
5. Private Claims



I, WAYNE A. MOSTROM, in a field survey on AUGUST 29, 1995, do hereby certify that under requirements of P.A. 74, Michigan P.A. of 1970, the corner points mentioned in lines 1 and 2 above were in conformance with regulations and rules therefore as required in the current manual of survey instructions of the United States Department of the Interior, Bureau of Land Management or by a decree of a Court of Law and/or that the corner points mentioned in lines 3, 4 and 5 above were in conformance with the rules of the Michigan Board of Professional Surveyors or by a Decree of a Court of Law; established, re-established, monumented, re-monumented, recovered, found as expressed below:

NOTE: Not more than 4 corners, all in the same town and range, may be recorded on this certificate.

A. Description of original monument and accessories and/or subsequent restoration:

- 1865 SURVEY IN BK A, PG 102 1975 LCRC IN 3/80 1987 SURVEY BY W. MOSTROM
"STAKE. FROM OLD BEARING." FOUND CHISELED "4" IN CONC. POST FD. CHISELED "T" ON TOP CONC. POST
1972 SURVEY IN 364/585 SHOWS IRON 28.72' E. OF COR. SEE PLAT OF SHADY POINT AND AVERY'S ADD. 1986 SURVEY BY W. MOSTROM COR. FALLS IN CONC. POST IRON = EAST 28.72'
1988 SURVEY BY D. MOSTROM FD. CHISELED "T" ON CONC. POST SEE AVERY'S ADD. NO. 1

B. Description of corner evidence found and/or method applied in restoring or reestablishing corner:

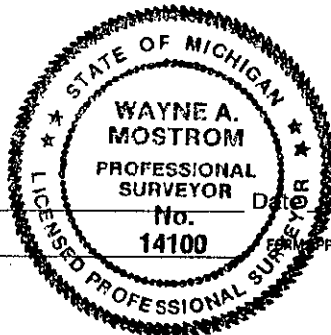
FD. CHISELED "T" ON N. SIDE OF TOP OF CONC. ANCHOR POST
SW COR. PORCH = NE 99.5'
14" PINE = N30°W 89.4'
IRON BAR = N89°50'E 28.72'
POST IN E-W FENCE & FENCE TO SOUTH

RATIFIED BY PEER GROUP IN ACCORDANCE WITH P.A. 345 ON Oct. 23, 1995 Wain CO. REPRESENTATIVE

C. Description of monument for corner and accessories established to perpetuate locating the position of the corner:

PAINTED "T" CHISELED IN TOP OF CONC. A.P. 7" SQUARE.
SW COR. PORCH = N65°E 99.50'
N & W IN W. SIDE 14" PINE = N30°W 89.40'
N & W IN N. SIDE P.P. = N85°W 15.53'
TOP/IRON A.P. = N10°W 78.10'
IRON BAR = N89°50'E 28.72'

Signed by Wayne A. Mostrom
Surveyor's Michigan License No. 14100



Date 10/27/95

APPROVED BY MICHIGAN STATE BOARD OF PROFESSIONAL SURVEYORS, JAN. 28, 1971 REVISED MAY 14, 1975 REVISED JAN., 1993

REMONUMENTATION

LIBER 4 PAGE 187