

MICHIGAN
DEPARTMENT OF CONSERVATION
FORESTRY DIVISION

LAND CORNER RECORD

T. 41 N.R. 16W

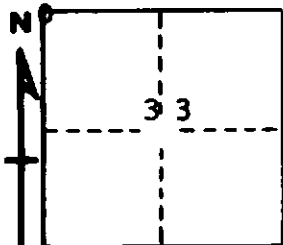
Schoolcraft COUNTY

DESCRIPTION OF CORNER Section corner for sections ^{29/28} 32/33

CORNER MONUMENT 2" iron pipe with 2 1/4" brass cap

DATE MONUMENT PLACED AND WITNESSED 6/24/68, F. J. Bray

WITNESSES TO CORNER..... 20" W. Pine (NBT) N 10° E, 10 links



12" W. Pine (NBT) East, 37 links

15" R. Pine (NBT) S 17° W, 46 links

AND

CIRCLE CORNER REGISTERED

DESCRIPTION IN DETAIL AS TO HOW CORNER WAS LOCATED AND IDENTIFIED OR RESTORED.

This corner was set by Carl Christensen, registered land surveyor, May 25, 1950.

SURVEYOR'S SEAL

SIGNED Frank J. Bray DATE 8/28/68
REGISTERED LAND SURVEYOR
Frank J. Bray