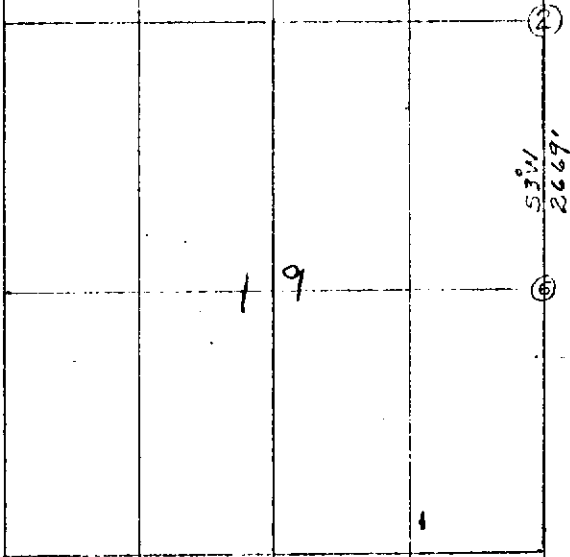


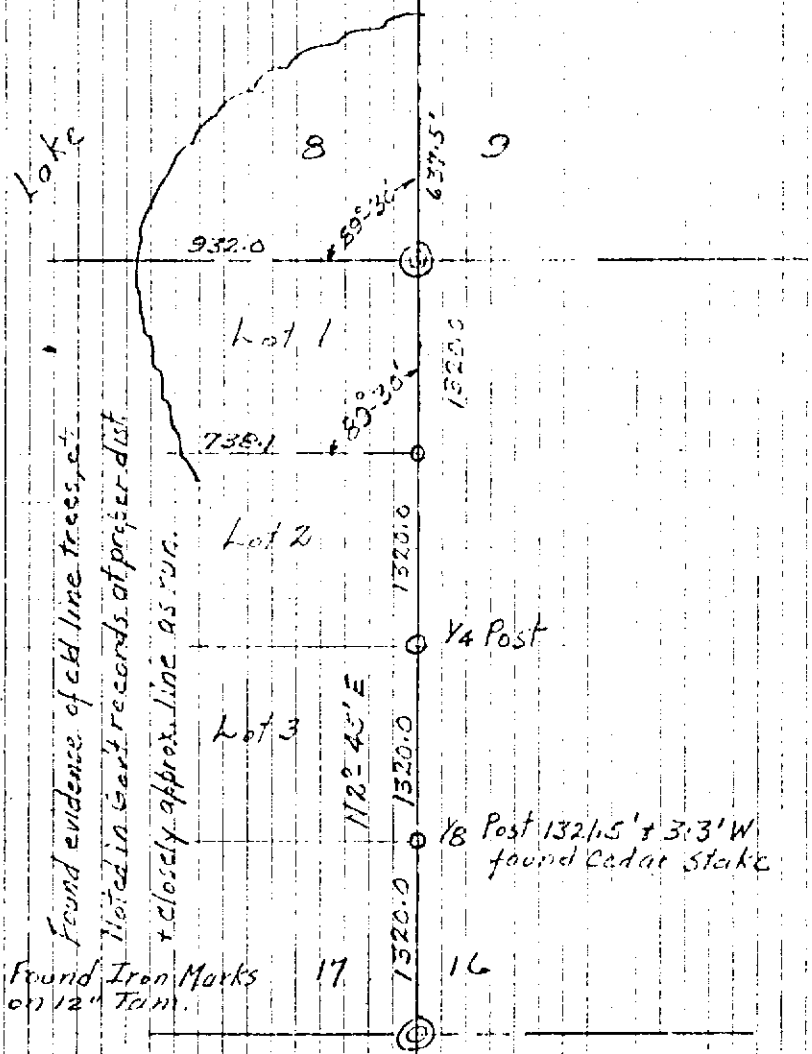
- ② = Corner Common to 17-18-19-20, T41N, R16W
- ⑥ = 1/4 corner Common to 19-20, " "



- ② Cedar stake { Cedar stump 12 N70°E 60.0 ft
" Stub 30 N12°W 51.5 ft
- ⑥ Pine stake { Fence post 7" 5.5"W 40.5 ft
SE corner Blacksmith shop 43.5 ft

Sept. 26, 1912 by
Ernest Weaver - County Surveyor

on Line North between 16+17, T41N, R16W



INDIAN
LAKE
BOOK # 1