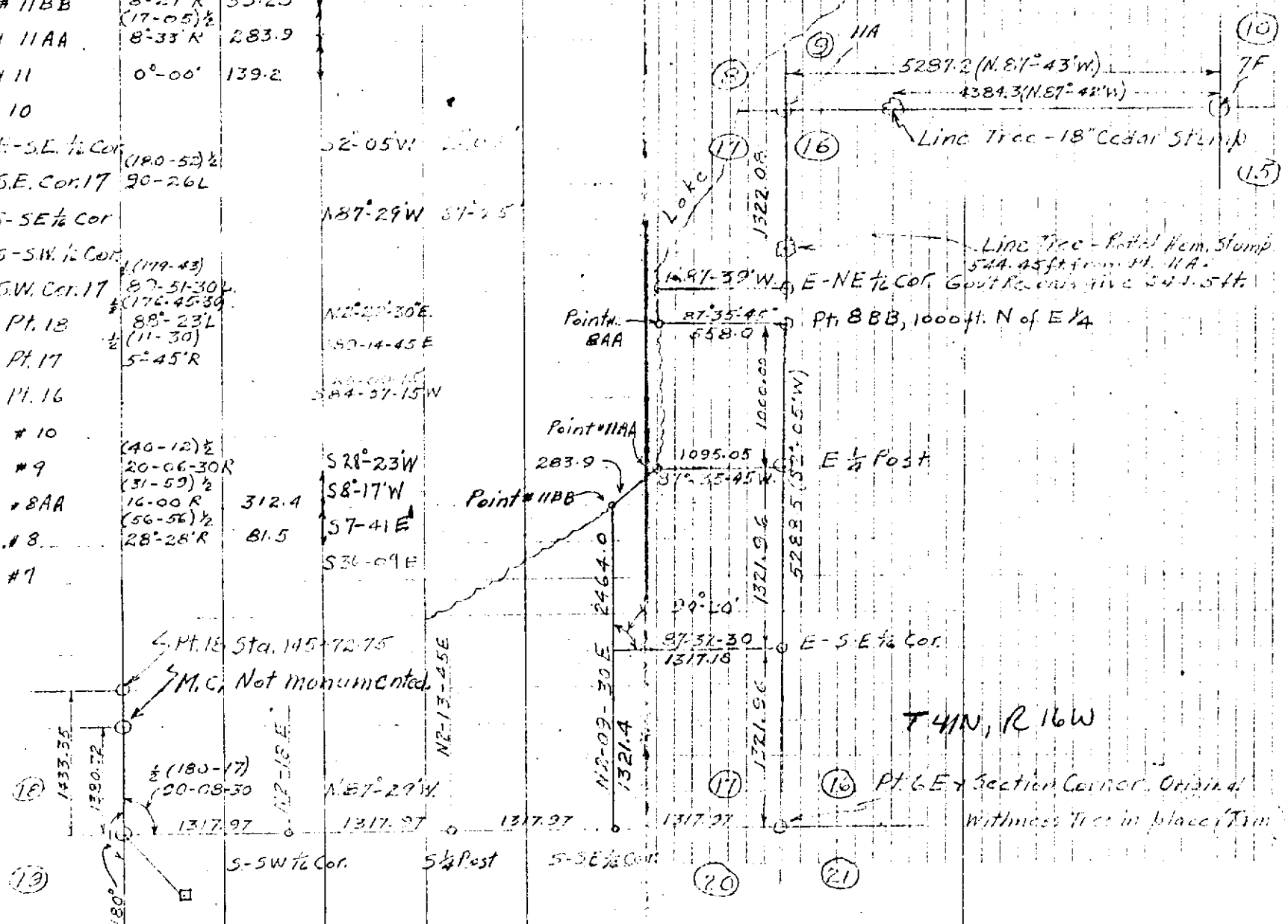


#13		
#12	0°-30'	
#11BB	(16-54)½ 8°-27'R	53.25
#11AA	(17-05)½ 8°-33'R	283.9
#11	0°-00'	139.2
#10		
E-S.E. ¼ Cor.	(180-52)½	52°-05'W
S.E. Cor. 17	90-26L	
S-SE ¼ Cor.		N87°-29'W 87°-25'
S-S.W. ¼ Cor.	(179-43)	
S.W. Cor. 17	(87-51-30)½ (176-45-39)½	N22°-27'-30"E 150-14-45 E
Pt. 18	88°-23'L (11-30)½	
Pt. 17	5°-45'R	
Pt. 16		N44°-37'-15"W
#10	(40-12)½	
#9	20-06-30R (31-59)½	S28°-23'W S8°-17'W
#8AA	16-00 R (56-56)½	312.4 S7°-41'E
#8	28°-28'R	81.5 S36°-09'E
#7		

-24-

-95-



Point 18 Sta. 145-72.75
M.C. Not monumented

T41N, R16W
Pt. 6 E Section Corner. Original
Witness Tree in place (T11)