

**LAND CORNER RECORDATION CERTIFICATE**  
**Filing Requirement of Act 74, Mich. P.A. 1970**

For corners in  
Schoolcraft  
 (County)

Located In: \_\_\_\_\_ Corner Code # \_\_\_\_\_

1. Public Land Survey  
 T \_\_\_ R \_\_\_  
 T \_\_\_ R \_\_\_  
 T \_\_\_ R \_\_\_  
 T \_\_\_ R \_\_\_

2. Property Controlling  
 in Section  
 S 31 T 41N R 17W \_\_\_\_\_  
 S 31 T 41N R 17W \_\_\_\_\_  
 2  
 5

3. Miscellaneous  
 Property in Sec.  
 S \_\_\_ T \_\_\_ R \_\_\_  
 S \_\_\_ T \_\_\_ R \_\_\_

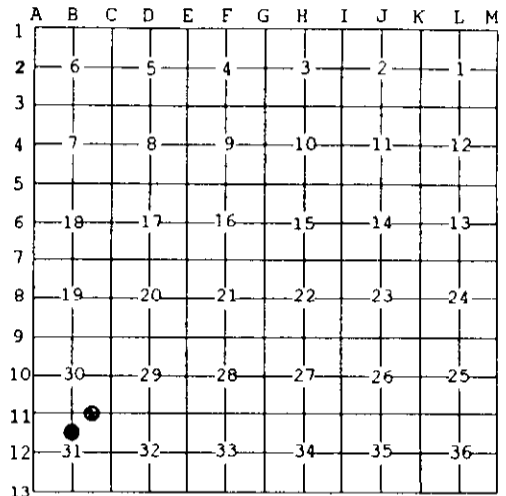
4. Lot No. \_\_\_\_\_, Recorded Plat \_\_\_\_\_  
 5. Private Claims \_\_\_\_\_

Register of Deeds Stamp & File Number

Jun 03 2003

I, Stephan J. Szyszkoski, in a field survey on \_\_\_\_\_, 20\_\_\_\_ do hereby state that under requirements of P.A. 74, Michigan P.A. of 1970, the corner points mentioned in lines 1 and 2 above were in conformance with regulations and rules therefore as required in the current manual of survey instructions of the United States Department of the Interior, Bureau of Land Management or by a decree of a Court of Law and /or that the corner points mentioned in lines 3, 4 and 5 above were in conformance with the rules of the Michigan Board of Land Surveyors or by a Decree of a Court of Law; established, re-established, monumented, recovered, found as expressed below:

NOTE: Not more than 2 corners, all in the same town and range, may be recorded on this certificate.

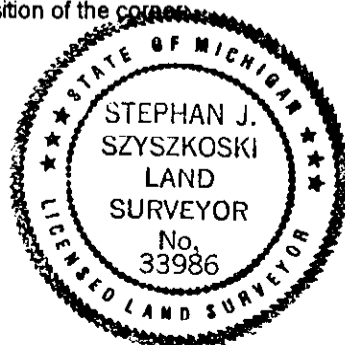


A. Description of original monument and accessories and/or subsequent restoration:  
 (2-Sec. 31) East 1/16 corner between Sections 30 and 31. Not established in the original survey. Found no subsequent record.  
 (5-Sec. 31) North 1/16 corner, Section 31. Not established in the original survey.

B. Description of corner evidence found and/or method applied in restoring or reestablishing corner:  
 (2-Sec. 31) Found a 3/4" ID iron pipe placed by an unknown surveyor 1.0' east and 0.7' south of a position midway and on line between Section and Quarter corners. Accepted same.  
 (5-Sec. 31) Established the corner midway and on a straight line between Quarter corner and Center of Section 1314.65' north and south.

C. Description of monument for corner and accessories established to perpetuate locating the position of the corner:

(2) 3/4" ID iron pipe. Blazed, scribed, and set measuring nails in: 10" Hemlock S36W 6.65' "E1/16 BT" 6" Maple S29E 22.3' do 5" Spruce N48E 2.55' do 6" Spruce N08W 7.3' do Steel fence post is S30W 0.8' Bearings are magnetic. Distances are to nail with tag.	(5) Set 1" ID x 36" I. pipe with 4" alum. MDNR cap. Blazed, scribed, and set measuring nails in: 5" triple W. Pine S59E 43.95' "N1/16 BT" 5" W. Pine S12W 47.5' do Set measuring nails/tags in but did not blaze or scribe the following: 4" W. Birch N16W 44.0' 8" Cherry N57W 35.7' Bearings are magnetic. Distances are to nail with tag.
--	--



Signed by Stephan J. Szyszkoski Date 6/16/03  
 Surveyor's Michigan License No. 33986