

MICHIGAN
DEPARTMENT OF CONSERVATION
FORESTRY DIVISION

LAND CORNER RECORD

T. 42 N.R. 15 & 16

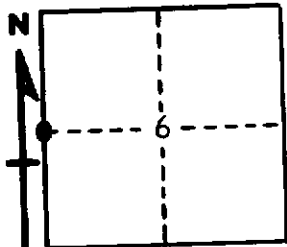
Schoolcraft COUNTY

DESCRIPTION OF CORNER 1/4 corner for sections T42N R16W 1/6 T42N R15W

CORNER MONUMENT 1" Iron Pipe with 4" Aluminum cap

DATE MONUMENT PLACED AND WITNESSED 8/10/67, Frank J. Bray with M. Burnis

WITNESSES TO CORNER..... 12" R. Pine (1/4S)(NBT) N 49° W, 70½ Links



13" R. Pine (1/4S)(NBT) N 89° E, 107 Links

AND

CIRCLE CORNER REGISTERED

DESCRIPTION IN DETAIL AS TO HOW CORNER WAS LOCATED AND IDENTIFIED OR RESTORED.

Placed on line and the single proportioned measurement between section corner to south and town corner to north. Wood post near checks with stump bottom to SW but no evidence of stump to NW.

SURVEYOR'S SEAL

SIGNED Frank J. Bray DATE 10/16/67
REGISTERED LAND SURVEYOR