

MICHIGAN
DEPARTMENT OF CONSERVATION
FORESTRY DIVISION

LAND CORNER RECORD

T. 42 N.R. 15 & 16 W

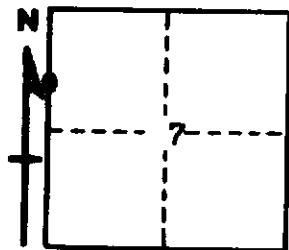
Schoolcraft COUNTY

DESCRIPTION OF CORNER North 1/16 Corner for Secs. 12, T42N R 16W and 7, T42N R 15W

CORNER MONUMENT 1" Iron Pipe with 4" Aluminum Cap

DATE MONUMENT PLACED AND WITNESSED 5/22/64 by A. O. Enger - 5/14/65 Monumented and recorded
by Bray and Hinds

WITNESSES TO CORNER..... 8" Cedar (1/16S BT), S 52° E, 22 lks.



6" Cedar (1/16S BT) S 67° W, 30 1/2 lks.

AND

CIRCLE CORNER REGISTERED

DESCRIPTION IN DETAIL AS TO HOW CORNER WAS LOCATED AND IDENTIFIED OR RESTORED.

This Corner was placed midway and on line between Section Corner to North, 20.189
Chains and 1/4 Corner same distance South.

SURVEYOR'S SEAL

SIGNED

Frank J. Bray
Frank J. Bray

REGISTERED LAND SURVEYOR

DATE 6/8/1965