

MICHIGAN
DEPARTMENT OF CONSERVATION
FORESTRY DIVISION

LAND CORNER RECORD

T. 42 N.R. 15 & 16 W

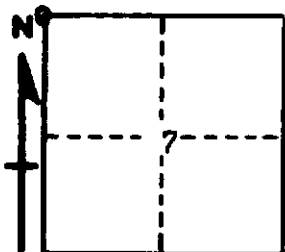
Schoolcraft COUNTY

DESCRIPTION OF CORNER Section Corner for Secs. 1/12 T42N R 16W and 6/7 T42N R15W

CORNER MONUMENT 1" Iron Pipe with 4" Aluminum Cap

DATE MONUMENT PLACED AND WITNESSED 5/5/64 by A.O. Enger - Monumented and recorded by
Bray and Hinds 5/14/65

WITNESSES TO CORNER..... 14" W. Pine (S1 NBT), N 27° W, 13 Lks.



14" Y. Pine (S6 N BT), N 54° E, 46½ Lks.

5" Cedar (S12 NBT), S 28° W, 24½ Lks.

AND

CIRCLE CORNER REGISTERED

DESCRIPTION IN DETAIL AS TO HOW CORNER WAS LOCATED AND IDENTIFIED OR RESTORED.

This Corner was set from rotted stumps of two probable original BT's., Hemlock 6" S 15° W, 46 Lks., and Hemlock 20" S 59° E, 51 Lks. Position checks good with distance South to swamp edge and stream. Old squared post in vicinity. Cedar register tree with names and dates back to 1940 near by. Distance South to Section Corner 80.76 Chs., which is 76 Lks. Long, but there seems to be an overrun throughout this township.

SURVEYOR'S SEAL

SIGNED Frank J. Bray DATE 6/8/1965
REGISTERED LAND SURVEYOR