

MICHIGAN
DEPARTMENT OF CONSERVATION
FORESTRY DIVISION

LAND CORNER RECORD

T. $\frac{43}{42}$ N. R. 15 W

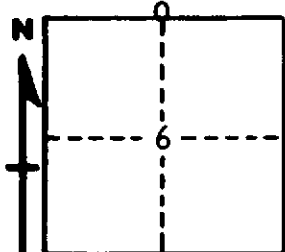
Schoolcraft COUNTY

DESCRIPTION OF CORNER 1/4 corner for section $\frac{31}{6}$ T43N R15W
T42N R15W

CORNER MONUMENT 1" Iron pipe with 4" Aluminum cap

DATE MONUMENT PLACED AND WITNESSED 8/10/67, Frank J. Bray with M. Burnis

WITNESSES TO CORNER..... 6" S. Maple (In clump)(1/4S)(NBT) S 39° W, 47 Links



8" Aspen (1/4S)(NBT) N 60° E, 68 1/2 Links

AND

CIRCLE CORNER REGISTERED

DESCRIPTION IN DETAIL AS TO HOW CORNER WAS LOCATED AND IDENTIFIED OR RESTORED.

Placed on line and the single proportioned measurement between section corner to east and town corner to west. No original evidence found.

SURVEYOR'S SEAL

SIGNED Frank J. Bray DATE 10/16/67
Frank J. Bray
REGISTERED LAND SURVEYOR