

✓
MICHIGAN
DEPARTMENT OF CONSERVATION
FORESTRY DIVISION

LAND CORNER RECORD

T. 43/42 N. R. 15 W

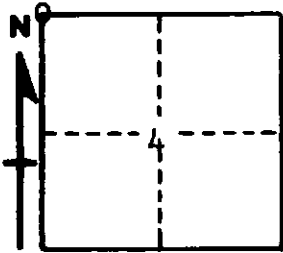
Schoolcraft COUNTY

DESCRIPTION OF CORNER Section corner for sections $\frac{32}{33}$ T43N R15W
5/4 T42N R15W

CORNER MONUMENT 1" Iron pipe with 4" Aluminum cap

DATE MONUMENT PLACED AND WITNESSED 8/10/67, Frank J. Bray with M. Burnis

WITNESSES TO CORNER..... 8" J. Pine (S32)(NBT) N 52° W, 74 Links



7th W. Birch (S4)(NBT) S 77° E, 93 Links

AND

CIRCLE CORNER REGISTERED

DESCRIPTION IN DETAIL AS TO HOW CORNER WAS LOCATED AND IDENTIFIED OR RESTORED.

Reestablished by single proportioned measurement and on line between 1/4 corner 1/2 mile to east and town corner 2 miles to west. No original evidence found.

SURVEYOR'S SEAL

SIGNED Frank J. Bray DATE 10/16/67
Frank J. Bray
REGISTERED LAND SURVEYOR