

MAY 13 1997

COMMISSION

SCHOOLCRAFT COUNTY PEER GROUP APPROVED

DATE 12/10/96

LAND CORNER RECORDATION CERTIFICATE Filing Requirement of Act 74, Mich. P.A. 1970

For corners in

Table with columns: Schoolcraft (County), Located In, Corner Code #. Includes entries for Public Land Survey, Property Controlling in Section, and Miscellaneous Property in Sec.

Received & Filed this 30 day of Dec 19 96 at 9:31 A M Sigrid I. Hedberg Schoolcraft Co. Reg. of Deeds

Register of Deeds Stamp & File Number

4. Lot No. , Recorded Plat 5. Private Claims

I, Thomas P. O'Brien in a field survey on Dec. 20, 1996 do hereby state that under requirements of P.A. 74, Michigan P.A. of 1970, the corner points mentioned in lines 1 and 2 above were in conformance with regulations and rules therefore as required in the current manual of survey instructions of the United States Department of the Interior, Bureau of Land Management or by a decree of a Court of Law and /or that the corner points mentioned in lines 3, 4 and 5 above were in conformance with the rules of the Michigan Board of Land Surveyors or by a Decree of a Court of Law; established, re-established, monumented, recovered, found as expressed below.

NOTE: Not more than 2 corners, all in the same town and range, may be recorded on this certificate.

Grid table with columns A-M and rows 1-13. Cell 12, 34 contains an 'X'.

A. Description of original monument and accessories and/or subsequent restoration:

I-12 (E 1/4 Corner Sec. 34) Sept. 18, 1850 - Algernon Merryweather D.S. set qr. section post. Cedar 8 in. N45W 2 links Cedar 10 in. S60E 5 links

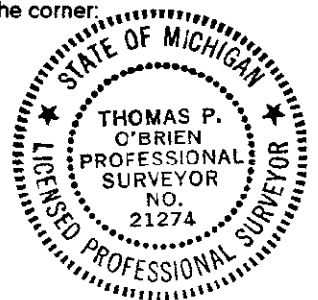
B. Description of corner evidence found and/or method applied in restoring or reestablishing corner:

I-12 Dec. 20, 1996 - Thomas P. O'Brien, P.S. re-established corner by single proportionate measurement. No evidence of G.L.O. survey or subsequent restoration recovered.

C. Description of monument for corner and accessories established to perpetuate locating the position of the corner:

I-12 Schoolcraft County monument stamped to identify.

- Witnesses: 8" Cedar - N60°W - 55.23' 6" Cedar - N5°E - 32.21' 6" Cedar - N87°E - 43.61' 8" Cedar - S14°E - 23.30' 4" Cedar post - North - 2.0'



Signed by Thomas P. O'Brien Surveyor's Michigan License No. 21274

Date Dec. 24, 1996