

✓ MICHIGAN  
DEPARTMENT OF CONSERVATION  
FORESTRY DIVISION

# LAND CORNER RECORD

T. 43/42 N. R. 16 W

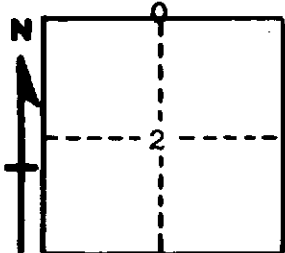
Schoolcraft COUNTY

DESCRIPTION OF CORNER 1/4 corner for sections <sup>35</sup> T43N R16W  
2 T42N R16W

CORNER MONUMENT 1" Iron pipe with 4" Aluminum cap

DATE MONUMENT PLACED AND WITNESSED 8/9/67, Frank J. Bray with M. Burnis

WITNESSES TO CORNER..... 7" Cedar (1/4S)(NBT) S 41° E, 21½ Links



9" Cedar (1/4S)(NBT) S 43° W, 14 Links

AND

CIRCLE CORNER REGISTERED

**DESCRIPTION IN DETAIL AS TO HOW CORNER WAS LOCATED AND IDENTIFIED OR RESTORED.**

Placed at old wood post with point of older post along side. Signature tree has Slater's name and is dated 9/3/31. Several trees with old blazes facing corner.

**SURVEYOR'S SEAL**

SIGNED Frank J. Bray DATE 9/16/67  
REGISTERED LAND SURVEYOR