

SURVEY & REMONUMENTATION

JAN 21 1998

SCHOOLCRAFT COUNTY
PEER GROUP APPROVED

DATE 11/12/97

LAND CORNER RECORDATION CERTIFICATE
Filing Requirement of Act 74, Mich. P.A. 1970

SECTION

For corners in

Located In:	Corner Code #
Schoolcraft (County)	K-5
1. Public Land Survey	T42N R16W
	T R
	T R
	T R
2. Property Controlling in Section	S T R
	S T R
3. Miscellaneous Property in Sec.	S T R
	S T R

Received & Filed this 23 day of
Dec 1997 at 3:10 P M
Sigrid I. Hedberg
Schoolcraft Co. Reg. of Deeds

Register of Deeds Stamp & File Number

- 4. Lot No. _____, Recorded Plat _____
- 5. Private Claims _____

I, Thomas P. O'Brien, in a field survey on Dec. 9, 1997 do hereby state that under requirements of P.A. 74, Michigan P.A. of 1970, the corner points mentioned in lines 1 and 2 above were in conformance with regulations and rules therefore as required in the current manual of survey instructions of the United States Department of the Interior, Bureau of Land Management or by a decree of a Court of Law and/or that the corner points mentioned in lines 3, 4 and 5 above were in conformance with the rules of the Michigan Board of Land Surveyors or by a Decree of a Court of Law; established, re-established, monumented, recovered, found as expressed below:

NOTE: Not more than 2 corners, all in the same town and range, may be recorded on this certificate.

	A	B	C	D	E	F	G	H	I	J	K	L	M
1													
2	6		5		4		3		2		1		
3													
4	7		8		9		10		11		12		
5											X		
6	18		17		16		15		14		13		
7													
8	19		20		21		22		23		24		
9													
10	30		29		28		27		26		25		
11													
12	31		32		33		34		35		36		
13													

A. Description of original monument and accessories and/or subsequent restoration:

K-5 N W Corner Section 13
Aug. 12, 1850 - Algernon Merryweather D.S. set corner post.
Spruce 6 in. N30E 10 links Do. 5 in. S19W 8 links

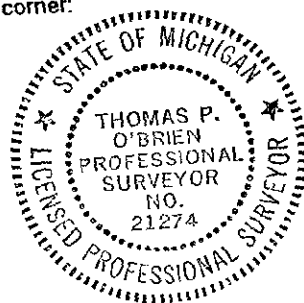
B. Description of corner evidence found and/or method applied in restoring or reestablishing corner:

K-5 Dec. 9, 1997 - Thomas P. O'Brien P.S. reestablished corner by double proportionate measurement between K3 to K7 and J5 to M5.

C. Description of monument for corner and accessories established to perpetuate locating the position of the corner:

K-5 Schoolcraft County Monument stamped to identify.

- Witnesses:
- 6" Tamarack - N 6°W - 46.32'
 - 8" Cedar - N58°E - 67.42'
 - 8" Cedar - S49°E - 87.20'
 - 10" R. Pine - S71°W - 118.85'
 - Carsonite Post - North - 1.0'



Signed by Thomas P. O'Brien P.S.
Surveyor's Michigan License No. 21274

Date December 19, 1997