

LAND CORNER RECORDATION CERTIFICATE
Filing Requirement of Act 74, Mich. P.A. 1970

For corners in

Schoolcraft	Located In:	Corner Code #
(County)		
1. Public Land Survey	T <u>42N</u> R <u>17W</u>	<u>J9</u>
	T <u> </u> R <u> </u>	<u> </u>
	T <u> </u> R <u> </u>	<u> </u>
	T <u> </u> R <u> </u>	<u> </u>
2. Property Controlling in Section	S <u>27</u> T <u>42N</u> R <u>17W</u>	<u>7</u>
	S <u> </u> T <u> </u> R <u> </u>	<u> </u>
3. Miscellaneous Property in Sec.	S <u> </u> T <u> </u> R <u> </u>	<u> </u>
	S <u> </u> T <u> </u> R <u> </u>	<u> </u>

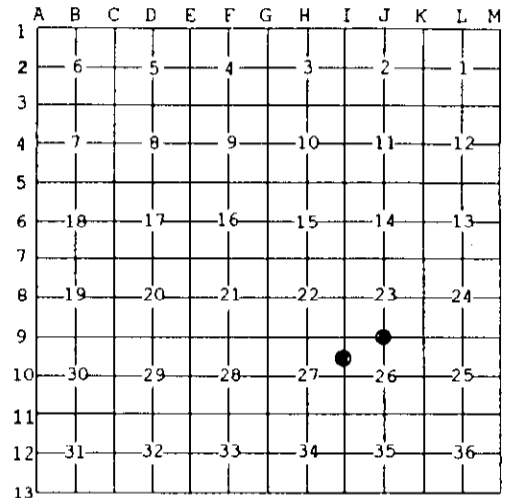
Register of Deeds Stamp & File Number

4. Lot No. _____, Recorded Plat _____
 5. Private Claims _____

7 Jun 02 2003
 J9 May 22 2003

I, Stephan J. Szyszkoski, in a field survey on _____, 20____ do hereby state that under requirements of P.A. 74, Michigan P.A. of 1970, the corner points mentioned in lines 1 and 2 above were in conformance with regulations and rules therefore as required in the current manual of survey instructions of the United States Department of the Interior, Bureau of Land Management or by a decree of a Court of Law and /or that the corner points mentioned in lines 3, 4 and 5 above were in conformance with the rules of the Michigan Board of Land Surveyors or by a Decree of a Court of Law; established, re-established, monumented, recovered, found as expressed below:

NOTE: Not more than 2 corners, all in the same town and range, may be recorded on this certificate.



A. Description of original monument and accessories and/or subsequent restoration:

(J9) Quarter corner common to Sections 23 & 26. 1850: Established by A.Merryweather on line between Section corners 40.065 chains east and west. Set post. Balsam 6 N30E 3 links, Balsam 5 S20W 11 links.
 (7-Sec. 27) North 1/16 corner between Sections 26 & 27. Not established in the original survey.

B. Description of corner evidence found and/or method applied in restoring or reestablishing corner:

(J9) The original post and accessories were not recovered. Found no acceptable evidence of the position of the original corner on the ground. Reestablished the corner midway and on a line of mean true bearing between Section corners 2661.89 ft. east and west. From the corner thus established, found a post marking approximate corner, by USFS, N35E 39.4' distant.
 (7-Sec. 27) Established the corner midway and on a straight line between Section and Quarter corners 1315.90' north and south.

C. Description of monument for corner and accessories established to perpetuate locating the position of the corner:

(J9) Set 1"IDx36" I.pipe with 4" alum. MDNR cap. Blazed, scribed, and set measuring nails in: 14" Cedar S38W 21.75' "1/4S NBT" 8" Cedar S12W 18.35' do 10" Cedar S89W 29.35' do 7" Cedar N53E 25.1' do Set Cedar post adjacent. Bearings are magnetic. Distances are to nail with tag.	(7) Set 1"IDx36" I.pipe with 4" alum. MDNR cap. Blazed, scribed, and set measuring nails in: 8" Maple N04W 3.6' "N1/16 BT" 8" twin Maple S75W 13.25' do 6" Maple S22E 9.5' do 5" Maple East 17.6' do Set Cedar post adjacent. Bearings are magnetic. Distances are to nail with tag.
---	---



Signed by Stephan J. Szyszkoski Date 6/19/03
 Surveyor's Michigan License No. 33986