

MICHIGAN
DEPARTMENT OF CONSERVATION
FORESTRY DIVISION

LAND CORNER RECORD

T. 43-44 N.R. 13 W

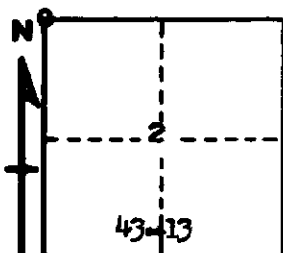
Schoolcraft COUNTY

DESCRIPTION OF CORNER Section Corner for Secs. 2-3, T43N R13W and 34-35 T44N R13W

CORNER MONUMENT 1" Iron Pipe with 4" Aluminum Cap

DATE MONUMENT PLACED AND WITNESSED 4/20/64 by A.O. Enger - 6/1/65 Monumented & recorded
Bray and Hinde

WITNESSES TO CORNER..... 8" Hemlock (S3 NBT), S 57° W, 52½ lks.



8" Hemlock (S2 NBT), S 55° E, 32 lks.

10" Hemlock (S35 NBT), N 65° E, 41½ lks.

AND

CIRCLE CORNER REGISTERED

DESCRIPTION IN DETAIL AS TO HOW CORNER WAS LOCATED AND IDENTIFIED OR RESTORED.

This Corner was set from one Original BT, Yellow Birch 12", S 75° W, 20 lks.

SURVEYOR'S SEAL

SIGNED Frank J. Bray DATE 9/10/1965
REGISTERED LAND SURVEYOR