

MICHIGAN
DEPARTMENT OF CONSERVATION
FORESTRY DIVISION

LAND CORNER RECORD

T. 43N R. 14W

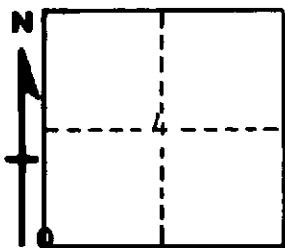
Schoolcraft COUNTY

DESCRIPTION OF CORNER Section Corner common to Sections 4-5-8-9

CORNER MONUMENT 1" Pipe with 4" Brass Cap.

DATE MONUMENT PLACED AND WITNESSED 6-14-61 with Frank J. Bray

WITNESSES TO CORNER..... 22" Red Pine (25 NBT) N49°W 108 links



16" Red Pine (S8 NBT) S45°W 86½ links

AND

CIRCLE CORNER REGISTERED

DESCRIPTION IN DETAIL AS TO HOW CORNER WAS LOCATED AND IDENTIFIED OR RESTORED.

This corner was re-established by proportional measure between Section Corner 1 mile North and 2 miles South.

Note: Corner lies on Jack Pine ridge.

SURVEYOR'S SEAL

SIGNED

Billy D. Buckler
REGISTERED LAND SURVEYOR
Billy D. Buckler

DATE December 29, 1961