

MICHIGAN
DEPARTMENT OF CONSERVATION
FORESTRY DIVISION

LAND CORNER RECORD

T. 43 N. R. 14W

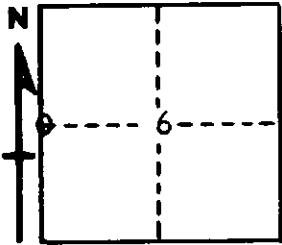
Schoolcraft COUNTY

DESCRIPTION OF CORNER $\frac{1}{4}$ Corner on West side Section 6

CORNER MONUMENT 1" Pipe with 4" Brass Cap

DATE MONUMENT PLACED AND WITNESSED 5-24-61

WITNESSES TO CORNER..... 7" Jack Pine ($\frac{1}{4}$ S6 BT) N 8°E 37 $\frac{1}{2}$ links



7" Jack Pine ($\frac{1}{4}$ S6 BT) S79°E 16 $\frac{1}{2}$ links

AND

CIRCLE CORNER REGISTERED

DESCRIPTION IN DETAIL AS TO HOW CORNER WAS LOCATED AND IDENTIFIED OR RESTORED.

This corner was established at 2.00 chains (record distance) North of $\frac{1}{4}$ Corner on East side of Section 1, T43N, R15W.

SURVEYOR'S SEAL

SIGNED Billy D. Buckler DATE December 29, 1961
REGISTERED LAND SURVEYOR
Billy D. Buckler