

MICHIGAN  
DEPARTMENT OF CONSERVATION  
FORESTRY DIVISION

# LAND CORNER RECORD

T. 43 N.R. 14W

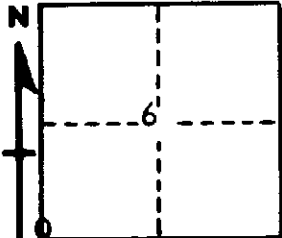
Schoolcraft COUNTY

DESCRIPTION OF CORNER Closing Corner for Sections 6-7 on West boundary of twp.

CORNER MONUMENT 1" Pipe with 4" Brass Cap

DATE MONUMENT PLACED AND WITNESSED 5-24-61

WITNESSES TO CORNER..... 8" Jack Pine (S6 NBT) N62°E 11½ links



8" Jack Pine (S7 NBT) S25°E 24 links

AND

CIRCLE CORNER REGISTERED

DESCRIPTION IN DETAIL AS TO HOW CORNER WAS LOCATED AND IDENTIFIED OR RESTORED.

This corner was re-established 2.00 chains (record distance) North of Section Corner 1-12, T43N, R15W.

SURVEYOR'S SEAL

SIGNED Billy D. Buckler DATE December 29, 1961  
REGISTERED LAND SURVEYOR  
Billy D. Buckler