

MICHIGAN
DEPARTMENT OF CONSERVATION
FORESTRY DIVISION

LAND CORNER RECORD

T. 43 N. R. 14W

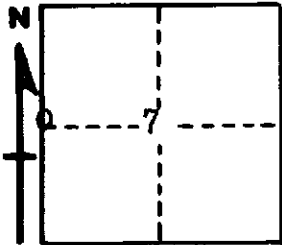
Schoolcraft COUNTY

DESCRIPTION OF CORNER $\frac{1}{4}$ Corner on West side Section 7

CORNER MONUMENT 1" Pipe with 4" Brass Cap

DATE MONUMENT PLACED AND WITNESSED 5-24-61

WITNESSES TO CORNER..... 8" Jack Pine ($\frac{1}{4}$ S 7 BT) S20°E 104 links



12" Jack Pine ($\frac{1}{4}$ S 7 BT) N88°E 166 $\frac{1}{2}$ links

AND

CIRCLE CORNER REGISTERED

DESCRIPTION IN DETAIL AS TO HOW CORNER WAS LOCATED AND IDENTIFIED OR RESTORED.

This corner was established at 2.06 chains (record distance) North of $\frac{1}{4}$ Corner on East side Section 12, T43N, R15W.
Corner lies on South edge of marsh.

SURVEYOR'S SEAL

SIGNED Billy D. Buckler DATE December 29, 1961
REGISTERED LAND SURVEYOR
Billy D. Buckler