

STATE OF MICHIGAN
DEPARTMENT
OF
NATURAL RESOURCES

LAND CORNER RECORD

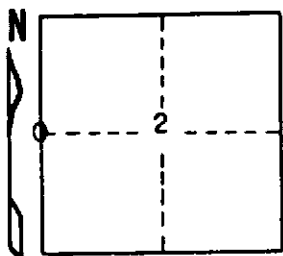
SCHOOLCRAFT COUNTY
T 43 N R 15 W

DESCRIPTION OF CORNER 1/4 corner for Sections 3/2

CORNER MONUMENT 1" iron pipe with 4" aluminum cap

DATE MONUMENT PLACED AND WITNESSED 4/5/72 F. J. Bray with M. Burnis

WITNESSES TO CORNER..... 6" Tamarack (1/8) (NBT) S38°E, 130.9'



9" W. Pine (1/8) (NBT) S08°E, 117.8'

AND

CIRCLE CORNER REGISTERED


DESCRIPTION IN DETAIL AS TO HOW CORNER WAS LOCATED AND IDENTIFIED OR RESTORED.

This corner was placed on line and the single proportioned measurement between the section corners to the north and to the south. No original evidence found.

SURVEYOR'S SEAL

DISTRIBUTION:

SIGNED


REGISTERED LAND SURVEYOR
Frank J. Bray

DATE

5-12-72

County Courthouse
Area Forester (Regions I & II)
District or Region Surveyor
Forestry Div., Lansing

R 4047
Rev. 10/68