

MICHIGAN
DEPARTMENT OF CONSERVATION
FORESTRY DIVISION

LAND CORNER RECORD

T. 43 N.R. 15 W

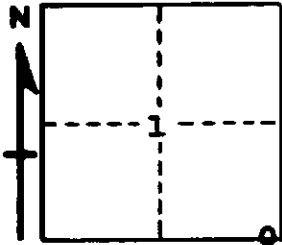
Schoolcraft COUNTY

DESCRIPTION OF CORNER Section Corner for Sections 1 and 12 on ^{East} West Boundary of Township

CORNER MONUMENT 1" Pipe with 4" Brass Cap

DATE MONUMENT PLACED AND WITNESSED 5/24/61 with Russell Hinds

WITNESSES TO CORNER....7" Jack Pine (S 12 NBT) S 78° W 16 Links



8" Jack Pine (S 1 NBT) N 55° W 24 Links

AND

CIRCLE CORNER REGISTERED

DESCRIPTION IN DETAIL AS TO HOW CORNER WAS LOCATED AND IDENTIFIED OR RESTORED.

This corner was re-established by ^{single} ~~double~~ proportionate measurement along township line.

SURVEYOR'S SEAL

SIGNED

Billy D. Buckler
REGISTERED LAND SURVEYOR

DATE July 26, 1961

Billy D. Buckler