

MICHIGAN  
DEPARTMENT OF CONSERVATION  
FORESTRY DIVISION

# LAND CORNER RECORD

T. 44  
43 N.R. 15 W

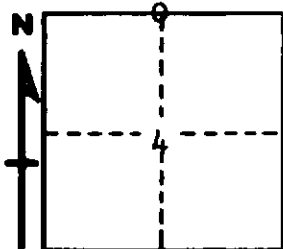
Schoolcraft COUNTY

DESCRIPTION OF CORNER 1/4 corner for sections <sup>33</sup> T44N R15W  
4 T43N R15W

CORNER MONUMENT 1" ~~Aluminum~~ Iron pipe with 4" Aluminum cap

DATE MONUMENT PLACED AND WITNESSED 8/3/67, Frank J. Bray with M. Burnis

WITNESSES TO CORNER..... 18" W. Pine (1/4S)(NBT) S 22° E, 27 1/2 Links



10" Cedar (1/4S)(NBT) N 55° W, 36 Links

AND

CIRCLE CORNER REGISTERED

**DESCRIPTION IN DETAIL AS TO HOW CORNER WAS LOCATED AND IDENTIFIED OR RESTORED.**

Placed at old notched Hemlock stump which is believed to be an ~~an~~ original BT. A bearing of N 2 1/2° E given in field notes but no distance. Signature tree near signed by Slater in 1935. Blazes in vicinity.

**SURVEYOR'S SEAL**

SIGNED Frank J. Bray DATE 10/16/67  
REGISTERED LAND SURVEYOR