

MICHIGAN
DEPARTMENT OF CONSERVATION
FORESTRY DIVISION

LAND CORNER RECORD

T. 44/43 N. R. 15 W

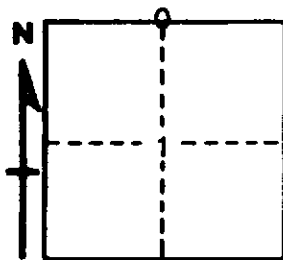
Schoolcraft COUNTY

DESCRIPTION OF CORNER 1/4 corner for sections ³⁶T44N R15W
1 T43N R15W

CORNER MONUMENT 1" iron pipe with 4" Aluminum cap

DATE MONUMENT PLACED AND WITNESSED 8/3/67, Frank J. Bray with M. Burnis

WITNESSES TO CORNER..... 7" J. Pine (1/4S)(NBT) N 02° E, 26 Links



14" R. Pine (1/4S)(NBT) S 14° E, 101 1/2 Links

AND

CIRCLE CORNER REGISTERED

DESCRIPTION IN DETAIL AS TO HOW CORNER WAS LOCATED AND IDENTIFIED OR RESTORED.

Placed midway and on line between section corner to west and township corner to east.
No original evidence found.

SURVEYOR'S SEAL

SIGNED Frank J. Bray
Frank J. Bray
REGISTERED LAND SURVEYOR

DATE 10/16/67