

STATE OF MICHIGAN  
DEPARTMENT  
OF  
NATURAL RESOURCES

LAND CORNER RECORD

Schoolcraft COUNTY

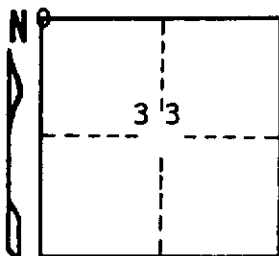
T 43 N R 15 W

DESCRIPTION OF CORNER Section corner for sections <sup>29/28</sup> 32/33

CORNER MONUMENT 1" iron pipe with 4" aluminum cap

DATE MONUMENT PLACED AND WITNESSED 7/23/69, F. J. Bray

WITNESSES TO CORNER..... 8" Aspen (S. 29) (NBT) N 56° W, 24 links



6" J. Pine (S. 28) (NBT) N 42° E, 36 links

AND

CIRCLE CORNER REGISTERED

DESCRIPTION IN DETAIL AS TO HOW CORNER WAS LOCATED AND IDENTIFIED OR RESTORED.

This corner was reestablished by double proportioned measurement between section corners four miles east, two miles west, one mile south, and 1/4 corner 1 1/2 miles north. No original evidence found.

SURVEYOR'S SEAL

DISTRIBUTION:

SIGNED

Frank J. Bray  
REGISTERED LAND SURVEYOR  
Frank J. Bray

DATE

8/15/69

County Courthouse  
Area Forester (Regions I & II)  
District or Region Surveyor  
Forestry Div., Lansing

R 4047  
Rev. 10/68