

STATE OF MICHIGAN
DEPARTMENT
OF
NATURAL RESOURCES

LAND CORNER RECORD

Schoolcraft COUNTY

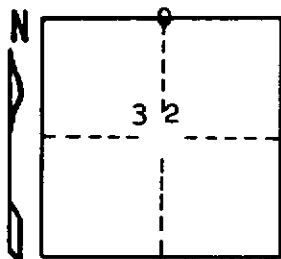
T 43N R 15 W

DESCRIPTION OF CORNER 1/4 corner for sections ²⁹/₃₂

CORNER MONUMENT 1" iron pipe with 4" aluminum cap

DATE MONUMENT PLACED AND WITNESSED 7/24/69, F. J. Bray

WITNESSES TO CORNER..... 5" J. Pine (1/4 S) (NBT) N 77° E, 11 links



4" J. Pine (1/4 S) (NBT) S 55° E, 15 links

2" R. Pine (X) S 87° W, 07 links

AND

CIRCLE CORNER REGISTERED

DESCRIPTION IN DETAIL AS TO HOW CORNER WAS LOCATED AND IDENTIFIED OR RESTORED.

This corner was placed midway and on line between section corners to east and to west.

SURVEYOR'S SEAL

DISTRIBUTION:

SIGNED Frank J. Bray DATE 8/15/69
REGISTERED LAND SURVEYOR
Frank J. Bray

County Courthouse
Area Forester (Regions I & II)
District or Region Surveyor
Forestry Div., Lansing

R 4047
Rev. 10/68