

LAND CORNER RECORDATION CERTIFICATE
Filing Requirement of Act 74, Mich. P.A. 1970

For corners in

Schoolcraft	Located In:	Corner Code #
(County)		
1. Public Land Survey	T <u>43N</u> R <u>15W</u>	<u>J7</u>
	T <u>43H</u> R <u>15W</u>	<u>I7</u>
	T _____ R _____	_____
	T _____ R _____	_____
2. Property Controlling in Section	S _____ T _____ R _____	_____
	S _____ T _____ R _____	_____
3. Miscellaneous Property in Sec.	S _____ T _____ R _____	_____
	S _____ T _____ R _____	_____

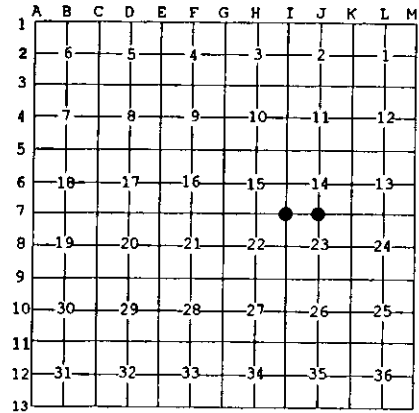
Register of Deeds Stamp & File Number

4. Lot No. _____, Recorded Plat _____
5. Private Claims _____

I7 Dec 15 1998
J7 Dec 07 1998

I, Stephan J. Szyszkoski, in a field survey on _____, 19____ do hereby state that under requirements of P.A. 74, Michigan P.A. of 1970, the corner points mentioned in lines 1 and 2 above were in conformance with regulations and rules therefore as required in the current manual of survey instructions of the United States Department of the Interior, Bureau of Land Management or by a decree of a Court of Law and/or that the corner points mentioned in lines 3, 4 and 5 above were in conformance with the rules of the Michigan Board of Land Surveyors or by a Decree of a Court of Law, established, re-established, monumented, recovered, found as expressed below.

NOTE: Not more than 2 corners, all in the same town and range, may be recorded on this certificate.



A. Description of original monument and accessories and/or subsequent restoration:

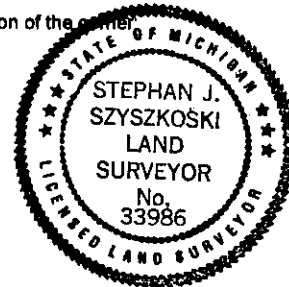
(J7) Quarter corner common to Sections 14-23. Reestablished by single proportionate measurement to the original record by F.J. Bray, RLS, in 1972. 1" iron pipe with 4" aluminum cap. 9" Hemlock N55W (mag.) 11.5', 11" Hemlock N85E (mag.) 16.1'
(I7) Corner common to Sections 14-15-22-23. Reestablished and monumented with a witness corner in 1972 by F.J. Bray, RLS. Set 1" pipe with 4" aluminum cap 75 links north of the corner, which is located in the Manistique River. Accessories to the witness corner: 10" W.Pine N07W (mag.) 7.0', 12" W.Pine S77W (mag.) 15.1'.

B. Description of corner evidence found and/or method applied in restoring or reestablishing corner:

(J7) Recovered the 1972 monument, a 1" ID iron pipe capped with a 4" dia. cast aluminum tablet, appropriately stamped, in good condition, and at record bearing and distance from the two Hemlock NBT's, recovered in good condition. Left the monument in place and marked two new accessories as described below.
(I7) Recovered the witness corner as described, in good condition, at record bearing and distance from the two 1972 NBT's. The W.Pine NW is a dead snag. The W.Pine SW is in good condition, now 20" DBH. For the purposes of subdividing Section 23, I reestablished the section corner 75 links south of this witness corner and on an extension of the line through it and the monumented quarter corner between 14 & 15 which bears N 0 deg. 12' 16"W mean true bearing, from the witness corner. The section corner, falling in the river, was not monumented. I left the witness corner monument in place and made 3 new NBT's for it, as described below.

C. Description of monument for corner and accessories established to perpetuate locating the position of the corner:

(J7) 1" pipe with 4" aluminum cap. Blazed, scribed, and set measuring nails in the following: 6" Hemlock N10W 12.4' "1/4S NBT" 6" W. Birch S37W 6.15' do The 1972 NBT's: 14" Hemlock N87E 16.3' "1/4S" 12" Hemlock N52W 11.7' do Bearings are magnetic. Dist. to nail with tag. Squared and scribed cedar post adjacent.	(I7) 1" pipe with 4" aluminum cap at witness corner. Blazed, scribed, and set measuring nails in: 6" Hemlock S31W 8.65' "WC BT" 6" Hemlock N45E 19.95' do 6" Hemlock S60E 2.8' do the 1972 witness: 20" W.Pine S80W 15.45' "WC" Bearings are magnetic. Dist. to nail with tag.
--	--



Signed by Stephan J. Szyszkoski
Surveyor's Michigan License No. 33986

Date 3/21/00

For the Michigan Department of Natural Resources - Forest Management Division