

MICHIGAN
DEPARTMENT OF CONSERVATION
FORESTRY DIVISION

LAND CORNER RECORD

T. 43 N.R. 16 W

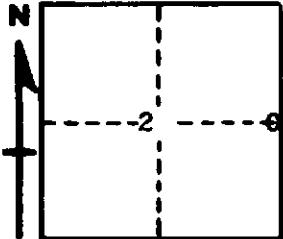
Schoolcraft COUNTY

DESCRIPTION OF CORNER 1/4 corner between Sec. 1 and 2

CORNER MONUMENT 2" I.D. iron pipe with 2 1/2" brass cap stamped "2-1/4-1, c.c."

DATE MONUMENT PLACED AND WITNESSED Placed in 1949; Rewitnessed 11/14/63

WITNESSES TO CORNER..... Cedar 10 N76W 11 Links, "1/4 c, NBT"



do 9 N35E 29 " " "1/4 c, NBT"

AND

CIRCLE CORNER REGISTERED

DESCRIPTION IN DETAIL AS TO HOW CORNER WAS LOCATED AND IDENTIFIED OR RESTORED.

Corner located and pipe set by Carl Christensen and Carl Makel from one original bearing tree, Cedar 10 West 9 links. BT present in 1964, dead, standing, both faces and all marks legible.

SURVEYOR'S SEAL

SIGNED Arthur O. Enger RLS 13581 DATE 9/7/65
REGISTERED LAND SURVEYOR

Billy D. Buckler RLS 8887

4/13/72

Billy D. Buckler