

STATE OF MICHIGAN
DEPARTMENT
OF
NATURAL RESOURCES
LAND CORNER RECORD

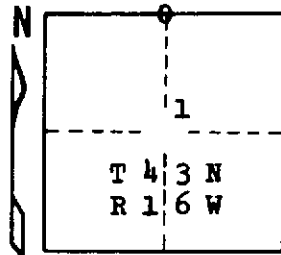
Schoolcraft COUNTY
44
T 43 N R 16 W

DESCRIPTION OF CORNER 1/4 corner for sections ³⁶T44N R16W
1 T43N R16W

CORNER MONUMENT 1" iron pipe with 4" aluminum cap

DATE MONUMENT PLACED AND WITNESSED 10/30/69, F. J. Bray and M. Burnis

WITNESSES TO CORNER..... 7" Tamarack (1/4 S) (NBT) S 75° E, 36 links



26" W. Pine (1/4 S NBT) N 89° W, 70 links

AND

CIRCLE CORNER REGISTERED

DESCRIPTION IN DETAIL AS TO HOW CORNER WAS LOCATED AND IDENTIFIED OR RESTORED.

This corner was placed midway and on line between town corner to east and section corner to west.

SURVEYOR'S SEAL

DISTRIBUTION:

SIGNED

Frank J. Bray
REGISTERED LAND SURVEYOR

DATE 11/18/69

Frank J. Bray

County Courthouse
Area Forester (Regions I & II)
District or Region Surveyor
Forestry Div., Lansing

R 4047
Rev. 10/68