

**LAND CORNER RECORDATION CERTIFICATE**  
**Filing Requirement of Act 74, Mich. P.A. 1970**

For corners in

Schoolcraft

(County)

Located In:

Corner Code #

1. Public Land Survey	T	<u>43N</u>	R	<u>16W</u>	E11
	T	<u>43N</u>	R	<u>16W</u>	E12
2. Property Controlling in Section	S	_____	T	_____	_____
	S	_____	T	_____	_____
	S	_____	T	_____	_____
3. Miscellaneous Property in Sec.	S	_____	T	_____	_____
	S	_____	T	_____	_____

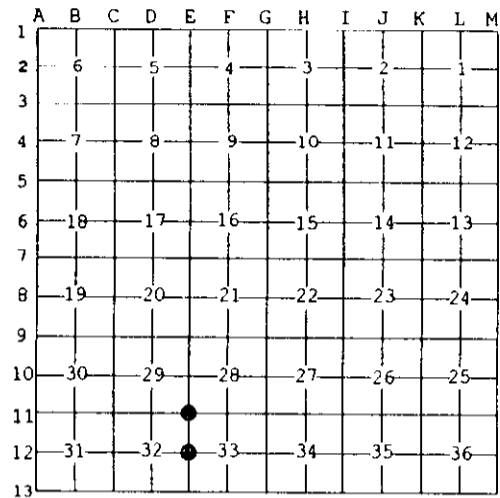
Register of Deeds Stamp & File Number

4. Lot No. \_\_\_\_\_, Recorded Plat \_\_\_\_\_  
 5. Private Claims \_\_\_\_\_

E12 Aug 18 2004  
 E11 Aug 17 2004

I, Stephan J. Szyszkoski, in a field survey on \_\_\_\_\_, 19\_\_\_\_ do hereby state that under requirements of P.A. 74, Michigan P.A. of 1970, the corner points mentioned in lines 1 and 2 above were in conformance with regulations and rules therefore as required in the current manual of survey instructions of the United States Department of the Interior, Bureau of Land Management or by a decree of a Court of Law and/or that the corner points mentioned in lines 3, 4 and 5 above were in conformance with the rules of the Michigan Board of Land Surveyors or by a Decree of a Court of Law; established, re-established, monumented, recovered, found as expressed below:

NOTE: Not more than 2 corners, all in the same town and range, may be recorded on this certificate.



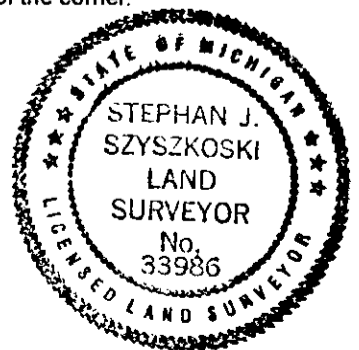
A. Description of original monument and accessories and/or subsequent restoration:  
 (E11) Corner common to Sections 28-29-32-33. 1850 - Established by A. Merryweather: S8°W corrected bet. Sec. 28&29 ...40.00 1/4 post...80.00 Section corner. Birch 8" N55E 24 links, Tamarac 12" S65W 9 links ...[thence] 80.00 Section corner [32 & 33].  
 (E12) Quarter corner common to Sections 32-33. 1850 - Established by A. Merryweather: [south] Corrected bet. Sec 32 & 33... 40.00 1/4 post. Spruce Pine 8" N40E 14 links, Spruce 7" S43W 55 links.

B. Description of corner evidence found and/or method applied in restoring or reestablishing corner:

(E11) The original post and accessories were not recovered. Reestablished the corner by double proportionate measurement to the original record between Quarter corner 1/2 mile north and Section corners 1 mile east, south and west.  
 (E12) The original post and accessories were not recovered. Reestablished the corner by single proportionate measurement to the original record between Section corners 2681.62' north and south.

C. Description of monument for corner and accessories established to perpetuate locating the position of the corner:

(E11) Set 1"IDx36" I.pipe with 4" alum. MDNR cap. Blazed, scribed, and set measuring nails in: 12" Cedar N04W 17.35' "S29 NBT" 10" Cedar S15W 19.2' "S32 NBT" 18" W.Pine S35W 22.25' "S32 NBT" 8" Cedar N61W 21.65' "S29 NBT" Bearings are magnetic. Distances are to nail with tag. Set cedar post adjacent.	(E12) Set 1"IDx36" I.pipe with 4" alum. MDNR cap. Blazed, scribed, and set measuring nails in: 6" J.Pine West 18.0' "1/4S NBT" 6" W.Pine S10E 28.25' do 6" Tamarack S68E 35.0' do 5" Tamarack N50E 15.85' do Set cedar post adjacent. Bearings are magnetic. Distances are to nail with tag.
--	---



Signed by Stephan J. Szyszkoski  
 Surveyor's Michigan License No. 33986

Date 9/14/04