

18

**LAND CORNER RECORDATION CERTIFICATE**  
Filing Requirement of Act 74, Mich. P.A. 1970

For corners in  
Schoolcraft  
(County)

Located In: Corner Code #

1. Public Land Survey	T 44NR 13M	E7
	T 44NR 13M	F7
	T R	
	T R	
2. Property Controlling in Section	S 16 T 44NR 13M	15
	S T R	
3. Miscellaneous Property in Sec.	S T R	
	S T R	

Register of Deeds Stamp & File Number

4. Lot No. \_\_\_\_\_, Recorded Plat \_\_\_\_\_  
5. Private Claims \_\_\_\_\_

I, Stephan J. Szyszkoski, in a field survey on January 19, 1993, 19\_\_\_\_, do hereby certify that under requirements of P.A. 74, Michigan P.A. of 1970, the corner points mentioned in lines 1 and 2 above were in conformance with regulations and rules therefore as required in the current manual of survey instructions of the United States Department of the Interior, Bureau of Land Management or by a decree of a Court of Law and/or that the corner points mentioned in lines 3, 4 and 5 above were in conformance with the rules of the Michigan Board of Land Surveyors or by a Decree of a Court of Law, established, re-established, monumented, re-monumented, recovered, found as expressed below:

**NOTE:** Not more than 4 corners, all in the same town and range, may be recorded on this certificate.

**A. Description of original monument and accessories and/or subsequent restoration:**

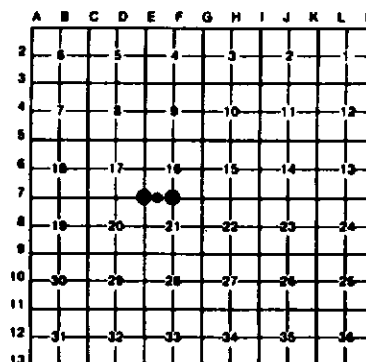
- (E7) Section corner common to Sections 16-17-20-21. Corner established by U.S. Deputy Surveyor Guy H. Carleton, 1850. Original BTs: Cedar 10 N56E 31, Tamarack 12 S84W 21. Found no subsequent record.  
(F7) Quarter corner common to Sections 16-21. Corner established by U.S. Deputy Surveyor Guy H. Carleton, 1850. Original BTs: Cedar 12 N38W 14, Fir 16 S54E 13. Found no subsequent record.  
(15) West 1/16 corner between sections 16-21. Corner not established in original survey. Found no subsequent record.

**B. Description of corner evidence found and/or method applied in restoring or reestablishing corner:**

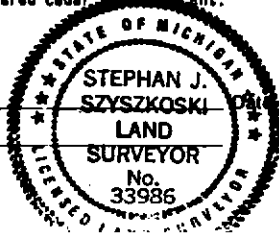
- (E7) Original post and accessories not recovered. Found no evidence of prior monumentation or evidence of use. Reestablished corner by double proportionate measurement to the original record between recorded section corners 1 mile west, 1 mile east, 1 mile south, and the recorded quarter corner 1/2 mile north. At the position for the corner, I placed a 1"x32" painted iron pipe capped with a 4" dia. cast aluminum NDNR tablet.  
(F7) Original post and accessories not recovered. Found no evidence of prior monumentation or evidence of use. Reestablished corner midway and on a straight line between adjacent section corners. At the position for the corner, I placed a 1"x32" painted iron pipe capped with a 4" dia. cast aluminum NDNR tablet, appropriately stamped.  
(15) Found no evidence of prior monumentation or evidence of use at corner position. Established corner midway and on a straight line between the recorded section corner 1343.83' west and the recorded quarter corner 1314.83' east. At the position for the corner, I placed a 1"x32" iron pipe capped with a 4" dia. cast aluminum NDNR tablet, appropriately stamped.

**C. Description of monument for corner and accessories established to perpetuate locating the position of the corner:**

- |  |   |  |
|--|---|--|
| (E7) 1" pipe with 4" aluminum cap. Blazed, scribed, and set measuring nails in the following new bearing trees:<br>6" Cedar S75E 15.4'<br>5" Cedar S28E 4.6'<br>6" Cedar S38W 12.7'<br>10" Cedar N41W 9.55'<br>Placed squared cedar post N57W 0.8' | (F7) 1" pipe with 4" aluminum cap. Blazed, scribed, and set measuring nails in the following new bearing trees:<br>3" Spruce N37W 17.8'<br>4" Spruce N16W 22.1'<br>4" Elm S80E 47.25'<br>4" Spruce S14E 35.8'<br>Squared cedar post adjacent. | (15) 1"x32" iron pipe with 4" cap. Blazed, scribed, and set measuring nails in the following bearing trees:<br>14" Cedar West 4.9' (1/16S BT)<br>6" Cedar S35E 13.8' (1/16S BT)<br>6" Cedar S05W 12.9' (1/16S BT)<br>A nail in squared cedar post N02E 3.9'<br>4" squared cedar post adjacent to the corner. |
|--|---|--|



Signed by Stephan J. Szyszkoski  
Surveyor's Michigan License No. 33986



1-28-93