

19

**LAND CORNER RECORDATION CERTIFICATE**  
Filing Requirement of Act 74, Mich. P.A. 1970

For corners in  
Schoolcraft

(County)	Located In:	Corner Code
1. Public Land Survey	T 44N R 13W	C7
	T 44N R 13W	C6
	T R	
	T R	
2. Property Controlling in Section	S 20 T 44N R 13W	3
	S T R	
3. Miscellaneous Property in Sec.	S T R	
	S T R	

Register of Deeds Stamp & File Number

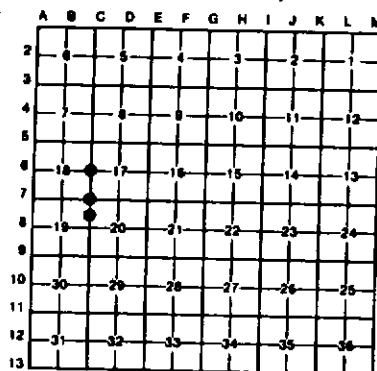
4. Lot No. \_\_\_\_\_ Recorded Plat \_\_\_\_\_  
5. Private Claims \_\_\_\_\_

3 January 13, 1993

C6 January 14, 1993

I, Stephan J. Szyszkoski, in a field survey on C7 January 14, 1993, 19\_\_\_\_ do hereby certify that under requirements of P.A. 74, Michigan P.A. of 1970, the corner points mentioned in lines 1 and 2 above were in conformance with regulations and rules therefore as required in the current manual of survey instructions of the United States Department of the Interior, Bureau of Land Management or by a decree of a Court of Law and/or that the corner points mentioned in lines 3, 4 and 5 above were in conformance with the rules of the Michigan Board of Land Surveyors or by a Decree of a Court of Law, established, re-established, monumented, re-monumented, recovered, found as expressed below:

**NOTE: Not more than 4 corners, all in the same town and range, may be recorded on this certificate.**



**A. Description of original monument and accessories and/or subsequent restoration:**

(C7) Section corner common to sections 17-18-19-20. Corner established by U.S. Government Surveyor Guy M. Carleton, 1850. Original BTs: Spruce 9 N59W 10, W. Birch 12 S36E 22. Subsequently monumented by U.S. Biological Survey in 1937 with a brass capped concrete post. USBS record (Book 29, page 4, survey of tract 2 dated April 29, 1937, U.S. Fish and Wildlife Service, Minneapolis, MN.) does not mention original evidence. New accessories are noted as follows: 18" pine stump scribed "x" S38E 0.28 ch, 8" W. Pine N55W 0.26 ch BT S18, 8" S. Maple N54E 0.415 ch BT S17, 9" W. Pine S47W 0.68 ch BT S19.

(C6) Quarter corner common to sections 17-18. Corner established by U.S. Deputy Surveyor Guy M. Carleton, 1850. Original BTs: W. Pine 6 N78W 60, Tamarack 4 N65E 55. Corner subsequently monumented by the U.S. Biological Survey in 1937 with a 2"x4'6" iron pipe. USBS records (Book 29, page 5, survey of tract 20ac dated April 29, 1937, U.S. Fish and Wildlife Service, Minneapolis, MN) do not mention original evidence. No accessories are noted.

(3) Corner not established in original survey. Found no subsequent record.

**B. Description of corner evidence found and/or method applied in restoring or reestablishing corner:**

(C7) Original post and accessories not recovered. Found USBS brass capped concrete post, projecting about 18", appropriately stamped, at record bearing and distance from the W. pine, maple, and stump accessories noted above. Accepted same as the marking the position of the corner and marked 2 new bearing trees, as described below.

(C6) Found and accepted a 2" dia. pipe whose location is in accord with the USBS record (USBS survey map "Seney Migratory Waterfowl Refuge" dated Dec. 1936) in its relation to existing corners 1/2 mile north and south. Left pipe undisturbed and marked new bearing trees as described below.

(3) Found no evidence of prior monumentation. Established corner midway and on a straight line between section corner 1313.61' north and quarter corner 1313.61' south. At the position for the corner, I placed a 1"x32" painted iron pipe capped with a 4" dia. cast aluminum MONR tablet, appropriately stamped.

**C. Description of monument for corner and accessories established to perpetuate locating the position of the corner:**

(C7) Found 2" dia. concrete post with brass cap.

Blazed, scribed, and placed measuring nails in the following new bearing trees: 5" W. Pine S58W 7.15'

6" Maple N30E 11.5'

Set measuring nails in the record BTs:

8" W. Pine N47W 17.2'

10" Maple N58E 27.3'

Squared cedar post N30E 0.9'.

(C6) Found 2" iron pipe

Blazed, scribed, and set measuring nails in the following new bearing trees:

4" Spruce N13E 41.55'

3" J. Pine N62E 24.8'

3" Spruce S18E 24.45'

2" Tamarack S13W 15.45'

Squared cedar post set N46E 1.0'

Placed location poster on cedar post west of corner at road, which reads

N37E, Apx. 252' to cor.

(3) 1" pipe with 4" aluminum cap.

Blazed, scribed, and set measuring nails

in the following new bearing trees:

14" Hemlock N82E 13.55'

16" Hemlock S57E 19.3'

5" Maple S85W 11.35'

6" Hemlock N22W 27.75'

Placed squared post adjacent to monument.

Signed by Stephan J. Szyszkoski

Date 1-28-93

Surveyor's Michigan License No. 33986

