

LAND CORNER RECORDATION CERTIFICATE
Filing Requirement of Act 74, Mich. P.A. 1970

For corners in
Schoolcraft

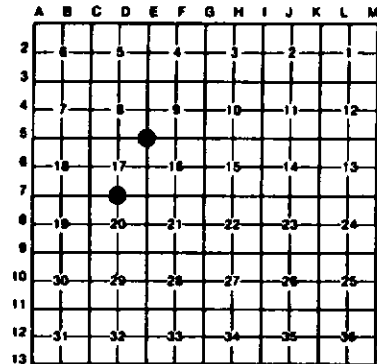
County	Located in:	Corner Code #
1. Public Land Survey	T 44N R 13W	07
	T 44N R 13W	ES
	T R	
	T R	
	T R	
2. Property Controlling in Section	S T R	
	S T R	
	S T R	
3. Miscellaneous Property in Sec.	S T R	
	S T R	

Register of Deeds Stamp & File Number

4. Lot No. _____ Recorded Plat _____
5. Private Claims _____

I, Stephan J. Szyszkoski, in a field survey on 07 June 01, 1993, 1993, do hereby certify that under requirements of P.A. 74, Michigan P.A. of 1970, the corner points mentioned in lines 1 and 2 above were in conformance with regulations and rules therefore as required in the current manual of survey instructions of the United States Department of the Interior, Bureau of Land Management or by a decree of a Court of Law and/or that the corner points mentioned in lines 3, 4 and 5 above were in conformance with the rules of the Michigan Board of Land Surveyors or by a Decree of a Court of Law, established, re-established, monumented, re-monumented, recovered, found as expressed below.

NOTE: Not more than 4 corners, all in the same town and range, may be recorded on this certificate.



A. Description of original monument and accessories and/or subsequent restoration:

(07) Quarter corner common to Sections 17-20. Original corner established by U.S. Deputy Surveyor Guy H. Carleton, 1850. Original BTs: Hemlock 12 N54E 08 links, Spruce 8 S69W 10 links. Found no subsequent record.
(E5) Section corner common to sections 8-9-16-17. Corner established by U.S. Deputy Surveyor Guy H. Carleton, 1850. Original BTs: Sugar 24 N70E 43 links, Sugar 12 S15W 33 links. Schoolcraft County Surveyor A.C. Carpenter notes in record Sept., 1899 as follows: Original corner stake at cor. Broken brick underneath. Cherry 5 S22W 52. Distance west to reestablished 1/4 corner shown as 38.97 ch. Distance west to reestablished section corner shown as 77.94 ch. Corner subsequently monumented by the U.S. Biological Survey ca. 1936 with a concrete post. USBS maps "SENEY MICHIGAN REFUGE" dated Feb. 1936 and Dec. 1936 show a concrete post with a witness iron pipe N0° 14' W, 0.50 ch. Distances west to USBS monuments at 1/4 and Section corners are shown to be 39.48 ch. and 78.91 ch. No mention on maps of evidence found in 1936.

B. Description of corner evidence found and/or method applied in restoring or reestablishing corner:

(07) Original post and accessories not recovered. Found no evidence of prior monumentation and no acceptable evidence of the location of the original corner. Reestablished the corner by single proportionate measurement to the original record between monumented section corners 2629.41' west and east. At the position for the corner, placed a 1"x32" iron pipe capped with a 4" dia. cast aluminum MDNR tablet, appropriately stamped. From the corner monumented, found a forester's squared post, marking an approximate corner 10' east and 3' south.
(E5) Found and accepted the remains of the USBS concrete post below the c/l of gravel surface of the county road. Approximately 4-5" of the bottom of the 2" dia. post was found, undisturbed, with a small diameter iron bar, bent, projecting from the top. The USBS witness pipe was found, 33' north, disturbed, laying horizontally beneath a couple inches of soil, apparently disturbed by cultivation. Replaced the concrete post with a 1" dia. x 32" iron pipe capped with a yellow plastic cap stamped "Mich D.N.R. LS 33986" buried beneath the road surface.

C. Description of monument for corner and accessories established to perpetuate locating the position of the corner:

(07) Set 1" pipe with 4" aluminum cap. Blazed, scribed and set measuring nails in the following new bearing trees: 6" Cedar S86E 40.2' 1/4S NBT 8" Cedar S25E 23.55' 1/4S NBT 8" Spruce N76W 5.7' 1/4S NBT 10" Spruce N43W 7.3' 1/4S NBT Placed a 5" squared cedar post adjacent.	(E5) 1" pipe with plastic MDNR cap. Blazed but did not scribe the following witnesses. Distances are to measuring nails and tags. bearings are magnetic: 3" elm S58W 52.2' fence post S12W 30.7' fence post N46E 48.0' fence post N18W 48.0' monumented 1/4 B/17 (MDNR pipe) west 2606.83'
--	---



Signed by Stephan J. Szyszkoski Date 6-24-93
Surveyor's Michigan License No. 33986