

22

**LAND CORNER RECORDATION CERTIFICATE**  
**Filing Requirement of Act 74, Mich. P.A. 1970**

For corners in  
Schoolcraft

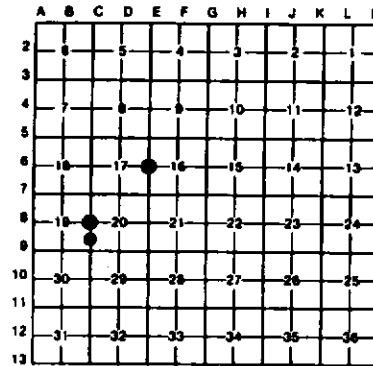
(County)	Located In:	Corner Code #
1. Public Land Survey	T <u>44N</u> R <u>13W</u>	<u>CB</u>
	T <u>44N</u> R <u>13W</u>	<u>E6</u>
	T <u>    </u> R <u>    </u>	<u>    </u>
	T <u>    </u> R <u>    </u>	<u>    </u>
2. Property Controlling in Section	S <u>20</u> T <u>44N</u> R <u>13W</u>	<u>10</u>
	S <u>    </u> T <u>    </u> R <u>    </u>	<u>    </u>
3. Miscellaneous Property in Sec.	S <u>    </u> T <u>    </u> R <u>    </u>	<u>    </u>
	S <u>    </u> T <u>    </u> R <u>    </u>	<u>    </u>

Register of Deeds Stamp & File Number

4. Lot No. \_\_\_\_\_, Recorded Plat \_\_\_\_\_  
 5. Private Claims \_\_\_\_\_

I, Stephan J. Szyszkoski, in a field survey on June 02, 1993, 19\_\_\_\_, do hereby certify that under requirements of P.A. 74, Michigan P.A. of 1970, the corner points mentioned in lines 1 and 2 above were in conformance with regulations and rules therefore as required in the current manual of survey instructions of the United States Department of the Interior, Bureau of Land Management or by a decree of a Court of Law and/or that the corner points mentioned in lines 3, 4 and 5 above were in conformance with the rules of the Michigan Board of Land Surveyors or by a Decree of a Court of Law, established, re-established, monumented, re-monumented, recovered, found as expressed below.

**NOTE: Not more than 4 corners, all in the same town and range, may be recorded on this certificate.**



**A. Description of original monument and accessories and/or subsequent restoration:**

- (CB) Quarter corner common to sections 19-20. Original corner established by U.S. Deputy Surveyor Guy H. Carleton, 1850. Original BTs: Hemlock 10 N14W 19 links, Birch 24 S43E 23 links. Found no subsequent record.
- (E6) Quarter corner common to Sections 16/17. Corner previously recorded by David B. Babbitt, RLS in 1975, as a 2" pipe with a 2" brass cap (Carl Cristensen monument) and the following NBTs: 12" Cedar N82E 12.4', 7" Cedar S21E 18.2'. Found no subsequent record.
- (10) South 1/16 corner between sections 19-20. Corner not established in the original survey. Found no subsequent record.

**B. Description of corner evidence found and/or method applied in restoring or reestablishing corner:**

- (CB) Original post and accessories not recovered. Found no evidence of prior monumentation or evidence of use at corner location. Found no acceptable evidence of the position of the original corner. Reestablished the corner by single proportionate measurement to the original record between monumented section corners 2627.22' north and south. At the position for the corner, placed a 1"x32" iron pipe capped with a 4" cast aluminum MDNR tablet, appropriately stamped.
- (E6) Found and accepted 2" pipe with 2" brass cap as previously recorded. Both 1975 witness trees have been cut. Marked new witness trees as described below.
- (10) Found no monumentation or evidence of use at corner location. Established the corner midway and on a straight line between monumented 1/4 corner 1313.61 ft. north and monumented section corner 1313.61 ft. south. At the position for the corner, placed a 1"x32" iron pipe capped with a 4" cast aluminum MDNR tablet.

**C. Description of monument for corner and accessories established to perpetuate locating the position of the corner:**

- |   |   |  |
|---|---|--|
| <p>(CB) 1" pipe with 4" aluminum cap. Blazed, scribed, and set measuring nails in the following new bearing trees:<br/>         10" W. Birch S04E 23.45' "1/4S NBT"<br/>         8" Maple N79W 11.55' "1/4S NBT"<br/>         6" Maple N42W 30.0' "1/4S NBT"<br/>         8" Maple N02W 21.05' "1/4S NBT"<br/>         Placed a 4" squared cedar post adjacent.</p> | <p>(E6) Fd. 2" pipe with 2" brass cap. Blazed, scribed, and set measuring nails in the following new bearing trees:<br/>         14" Cedar N40E 34.4' "1/4S NBT"<br/>         12" Y. Birch S80E 7.9' "1/4S NBT"<br/>         6" Balsam Poplar S59E 7.2' "1/4S NBT"<br/>         10" Hemlock N62W 30.3' "1/4S NBT"<br/>         placed 5" squared cedar post adjacent.</p> | <p>(10) 1" pipe with 4" aluminum cap. Blazed, scribed, and set measuring nails in the following bearing trees:<br/>         10" Maple S87E 8.75' "1/16S NBT"<br/>         8" Maple S45W 1.35' "1/16S NBT"<br/>         6" Maple N73W 7.8' "1/16S NBT"<br/>         10" Maple N21W 4.85' "1/16S NBT"<br/>         placed a 3" squared maple post adjacent. Bearings magnetic.</p> |
|---|---|--|

Signed by Stephan J. Szyszkoski  
 Surveyor's Michigan License No. 33986



6-24-93