

25

**LAND CORNER RECORDATION CERTIFICATE**  
 Filing Requirement of Act 74, Mich. P.A. 1970

For corners in  
 Schoolcraft

(County)	Located In:	Corner Code #
1. Public Land Survey	T 44R 13W	E13
	T R	
	T R	
	T R	
2. Property Controlling in Section	S 33T 44R 13W	13
	S 33T 44R 13W	12
3. Miscellaneous Property in Sec.	S T R	
	S T R	

Register of Deeds Stamp & File Number

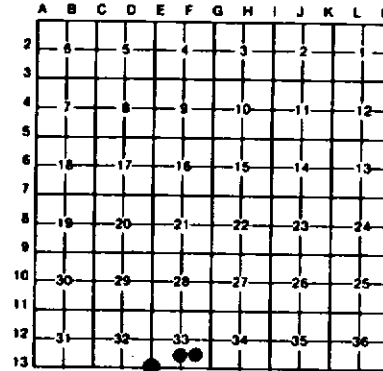
4. Lot No. \_\_\_\_\_, Recorded Plat \_\_\_\_\_  
 5. Private Claims \_\_\_\_\_

E13 July 28, 1993

12 January 12, 1994

I, Stephan J. Szyszkoski, in a field survey on 13 January 12, 1994, 19\_\_\_\_ do hereby certify that under requirements of P.A. 74, Michigan P.A. of 1970, the corner points mentioned in lines 1 and 2 above were in conformance with regulations and rules therefore as required in the current manual of survey instructions of the United States Department of the Interior, Bureau of Land Management or by a decree of a Court of Law and/or that the corner points mentioned in lines 3, 4 and 5 above were in conformance with the rules of the Michigan Board of Land Surveyors or by a Decree of a Court of Law, established, re-established, monumented, re-monumented, recovered, found as expressed below:

NOTE: Not more than 4 corners, all in the same town and range, may be recorded on this certificate.



A. Description of original monument and accessories and/or subsequent restoration:

(E13) Corner common to Sections 32-33 T44N-R13W and 4-5 T43N-R13W. Corner reestablished in 1982 by David B. Babbitt, RLS by single proportionate measurement to the original record. Babbitt placed a 1" pipe with RLS cap at the corner, buried in an E-W road, and marked the following new bearing trees: 14" Hemlock N56E 75.7', 14" Hemlock N05E 31.5', 12" Hemlock S44W 42.7', 10" Cedar S52E 24.5'. (13-Sec.33) Southeast 1/16 corner, Section 33. Corner not established in the original survey. Found no subsequent record. (12-Sec.33) South 1/16 Corner, Section 33. Corner not established in the original survey. Found no subsequent record.

B. Description of corner evidence found and/or method applied in restoring or reestablishing corner:

(E13) Found the 1982 monument disturbed. It had apparently been bent over by a road grader. All four 1982 NBTs were found in good condition. The bent pipe was removed, and the corner position was re-monumented at record bearing and distance from the 1982 NBTs. At the position for the corner I placed a 1" I.D.x36" iron pipe capped with a yellow plastic cap stamped "MICH DNR LS 33986". Set measuring nails with tags in the 1982 witnesses and remeasured as shown below.  
 (13-Sec.33) Found no evidence of prior monumentation at the corner position. Established the corner at the intersection of straight lines connecting opposite 1/16 corners, the 1/16 corners to the east and south being unmonumented as of this date. At the position for the corner, I placed a 1" I.D.x36" iron pipe capped with a 4" dia. cast aluminum MDNR tablet, appropriately stamped.  
 (12-Sec.33) Found no evidence of prior monumentation at the corner position. Established the corner midway between Quarter corner 1322.12' South and Center of Section 1322.12' North. The Center of Section, being unmonumented as of this date, was determined at the intersection of straight lines connecting opposite 1/4 corners. At the position for the South 1/16, I placed a 1" I.D.x36" iron pipe capped with a 4" dia. cast aluminum MDNR tablet, appropriately stamped.

C. Description of monument for corner and accessories established to perpetuate locating the position of the corner:

(E13) Set 1" pipe with plastic cap.  
 14" Hemlock N56E 76.0'  
 14" Hemlock N05E 32.05'  
 12" Hemlock S44W 42.9'  
 10" Cedar S52E 24.7'  
 Distances are to nails with tags.  
 Bearings are magnetic.

(13) Set 1" iron pipe with 4" MDNR cap.  
 Blazed, scribed, and set measuring nails in the following bearing trees:  
 5" Y. Birch N15E 21.35' "SE1/16 BT"  
 12" Maple N22W 31.15' "SE1/16 BT"  
 4" Ironwood S88W 24.35' "SE1/16 BT"  
 8" Maple S14E 6.0' "SE1/16 BT"  
 4" Squared post SW, 22.4'

(12) Set a 1" pipe with 4" MDNR cap.  
 Blazed, scribed, and set measuring nails in the following bearing trees:  
 14" W. Pine S10W 14.25' "S1/16 BT"  
 10" Maple S62E 40.8' "S1/16 BT"  
 8" Maple S00E 42.5' "S1/16 BT"  
 8" Beech N54W 27.8' "S1/16 BT"  
 Placed a 3" squared maple post adjacent.  
 Bearings are magnetic.

Signed by

STEPHAN J. SZYSZKOSKI

SURVEYOR

No. 33986

Date 5-9-94