

LAND CORNER RECORDATION CERTIFICATE
Filing Requirement of Act 74, Mich. P.A. 1970

For corners in
Schoolcraft

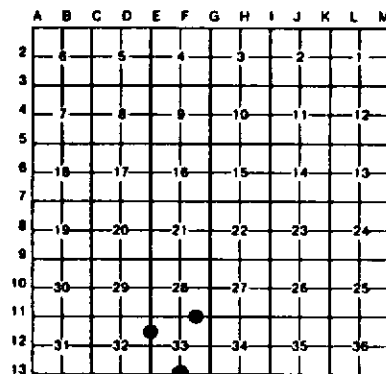
(County)	Located In:	Corner Code #
1. Public Land Survey	T 44N R 13W	F13
	T R	
	T R	
	T R	
2. Property Controlling in Section	S 33 T 44N R 13W	2
	S 33 T 44N R 13W	3
3. Miscellaneous Property in Sec.	S T R	
	S T R	

Register of Deeds Stamp & File Number

4. Lot No. _____, Recorded Plat _____
5. Private Claims _____

I, Stephen J. Szyzkowski, in a field survey on April 21, 1994, 19____; do hereby certify that under requirements of P.A. 74, Michigan P.A. of 1970, the corner points mentioned in lines 1 and 2 above were in conformance with regulations and rules therefore as required in the current manual of survey instructions of the United States Department of the Interior, Bureau of Land Management or by a decree of a Court of Law and/or that the corner points mentioned in lines 3, 4 and 5 above were in conformance with the rules of the Michigan Board of Land Surveyors or by a Decree of a Court of Law; established, re-established, monumented, re-monumented, recovered, found as expressed below:

NOTE: Not more than 4 corners, all in the same town and range, may be recorded on this certificate.



A. Description of original monument and accessories and/or subsequent restoration:

(F13) Quarter corner common to Section 33, T44N-R13W, and Section 4, T43N-R13W. Corner reestablished in 1982 by David B. Babbitt, RLS by single proportionate measurement between section corners East and West. The 1982 record states: 1" pipe with RLS cap buried at the corner. New bearings: 10" Ironwood N51E 28.4', 8" N. Maple, N52W 30.7', 4" R. Maple, S42W 27.9', 8" N. Maple S20W 27.0'. Found no subsequent record.

(2-Sec. 33) East 1/16 corner between sections 28-33. Corner not established in the original survey. Found no subsequent record.

(3-Sec. 33) North 1/16 corner between Sections 32-33. Corner previously established in 1982 by David B. Babbitt, RLS. 1982 record states: Set DNR monument, bearings: 8" N. Maple S38W 21.7', 12" W. Birch N48W 33.1', 6" R. Maple N61E 44.4', 6" R. Maple S53E 28.0'. Found no subsequent record.

B. Description of corner evidence found and/or method applied in restoring or reestablishing corner:

(F13) Found and accepted the 1982 monument as described, at record bearing and distance from the Ironwood and N. Maple NW NBTs, both in good condition. The other two NBTs have been cut. Placed measuring nails with tags in the remaining 1982 NBTs, remeasured, and marked two new bearings as shown below.

(2-Sec. 33) Found no evidence of prior monumentation at the corner position. Established the corner midway and on a straight line between recorded 1/4 corner 1319.54' west and recorded section corner 1319.54' east. At the position for the corner, I placed a 1" I.D. x 36" painted iron pipe capped with a 4" dia. cast aluminum MDNR tablet, appropriately stamped.

(3-Sec. 33) Found and accepted the 1982 monument as described, at record bearing and distance from 2 remaining bearing trees, the maples NE and SE, both in good condition. The other two have been cut. Set measuring nails with tags in these BTs and marked two new trees as described below.

C. Description of monument for corner and accessories established to perpetuate locating the position of the corner:

(F13) Found 1" iron pipe with plastic RLS cap, buried.
Power Pole MC780 S71W 75.5'
8" Maple N24W 20.4' "1/4S NBT"
11" Ironwood N51E 28.9'
10" N. Maple N52W 30.9'
Set measuring nails with tags in all above. Bearings are magnetic.

(2) Set 1" iron pipe with 4" MDNR cap. Blazed, scribed, and set measuring nails in the following bearing trees:
5" Balsam N32E 17.4' "E1/16 BT"
10" Maple N60E 30.5' "E1/16 BT"
12" Maple East 18.0' "E1/16 BT"
6" Cherry S50E 28.7' "E1/16 BT"
Set 5" squared cedar post adjacent. Bearings are magnetic.

(3) Found 1" pipe with 4" MDNR cap Blazed, scribed and set measuring nails in the following bearing trees:
5" N. Maple N27E 17.5' "N1/16 BT"
3" Balsam S25W 18.3' "N1/16 BT"
remeasured to the 1982 BTs:
8" N. Maple N81E 45.0'
8" N. Maple S53E 28.1'
A 5" squared and scribed cedar post is adjacent to the monument. Bearings are magnetic.



Signature: Stephen J. Szyzkowski
Surveyor's Michigan License No. 33986

Date 5-9-94