

MICHIGAN
DEPARTMENT OF CONSERVATION
FORESTRY DIVISION

LAND CORNER RECORD

T. 44 & 45 N.R. 16 W

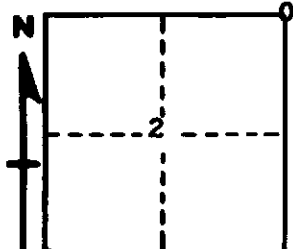
Schoolcraft COUNTY

DESCRIPTION OF CORNER Section Corner for Secs. 2, 1 T44N R16W

CORNER MONUMENT 1" x 4" Iron Pipe

DATE MONUMENT PLACED AND WITNESSED 9/20/63 by A. Q. Enger - 5/19/65 checked and recorded by Bray and Hinds

WITNESSES TO CORNER..... 10" Jack Pine (S36 NBT), N 40° E, 68 lks.



5" Jack Pine, (S35 NBT), N 19° W, 90 lks.

13" Red Pine, (S2 NBT), S 32° W, 150 lks.

AND

CIRCLE CORNER REGISTERED

DESCRIPTION IN DETAIL AS TO HOW CORNER WAS LOCATED AND IDENTIFIED OR RESTORED.

This Corner was set from an identified original BT, Y. Pine 10" S 58° W, 20 lks., face, but no marks, on down burned trees, a W. Pine Stump with no marks, S 14° E 25 lks., and in hollow in ground with pieces of pine roots in it. N 09° E 58 lks, all positions as given in original notes. A U.S. Biological Survey Monument marked being this corner lies S 32° W 41 lks. Manner of establishment not known but definitely was not set from original BT's.

SURVEYOR'S SEAL

SIGNED Frank J. Bray DATE 6/8/1965
REGISTERED LAND SURVEYOR