

LAND CORNER RECORDATION CERTIFICATE
 Filing Requirement of Act 74, Mich. P.A. 1970

For corners in Schoolcraft (County)	Located In:	Corner Code #
1. Public Land Survey	T ___ R ___	_____
	T ___ R ___	_____
	T ___ R ___	_____
	T ___ R ___	_____
2. Property Controlling in Section	S <u>8</u> T <u>46N</u> R <u>13W</u>	<u>3</u>
	S <u>8</u> T <u>46N</u> R <u>13W</u>	<u>5</u>
3. Miscellaneous Property in Sec.	S ___ T ___ R ___	_____
	S ___ T ___ R ___	_____

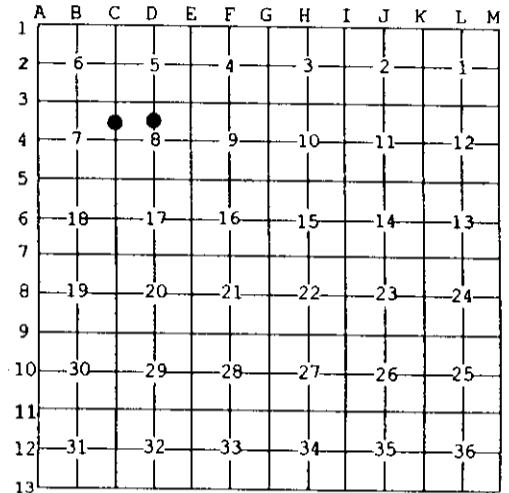
Register of Deeds Stamp & File Number

4. Lot No. _____, Recorded Plat _____
 5. Private Claims _____

5 Nov 25 2002
 3 Nov 06 2002

I, Stephan J. Szyszkoski, in a field survey on _____, 19____ do hereby state that under requirements of P.A. 74, Michigan P.A. of 1970, the corner points mentioned in lines 1 and 2 above were in conformance with regulations and rules therefore as required in the current manual of survey instructions of the United States Department of the Interior, Bureau of Land Management or by a decree of a Court of Law and /or that the corner points mentioned in lines 3, 4 and 5 above were in conformance with the rules of the Michigan Board of Land Surveyors or by a Decree of a Court of Law; established, re-established, monumented, recovered, found as expressed below:

NOTE: Not more than 2 corners, all in the same town and range, may be recorded on this certificate.



A. Description of original monument and accessories and/or subsequent restoration:
 (3-Sec. 8) North 1/16 corner between Sections 7-8. Not established in the original survey.
 (5-Sec. 8) North 1/16 corner, Section 8. Not established in the original survey.

B. Description of corner evidence found and/or method applied in restoring or reestablishing corner:
 (3-Sec. 8) Established the corner midway and on a line of mean true bearing between Section and Quarter corners 1334.21' north and south.
 (5-Sec. 8) Established the corner midway and on a straight line between 1/4 corner 1322.29' North and Center of Section 1322.29' South.

C. Description of monument for corner and accessories established to perpetuate locating the position of the corner:

(3) Set 1"IDx36" I.pipe with 4" dia. alum. MDNR cap. Blazed, scribed, and set measuring nails in: 4" B. Spruce N08E 13.65' "N1/16 BT" 5" B. Spruce N77E 10.65' do 4" B. Spruce N42W 20.30' do 4" B. Spruce S40W 16.05' do Bearings are magnetic. Distances are to nail with tag.	(5) Set 1"IDx36" I.pipe with 4" dia. alum. MDNR cap. Blazed, scribed, and set measuring nails in: 16" R.Pine N85E 238.3' "N1/16 BT" 4" J.Pine N62E 151.2' do 6" W.Pine S14W 29.85 "BT" The NE cor of a cabin's porch is S29W 172.85' distant. Bearings are magnetic. Dist. to trees are to nail with tag. Placed cedar post adjacent.
---	---



Signed by Stephan J. Szyszkoski Date 12/3/02
 Surveyor's Michigan License No. 33986