

LAND CORNER RECORDATION CERTIFICATE
Filing Requirement of Act 74, Mich. P.A. 1970

For corners in
Schoolcraft

(County)

Located in:

Corner Code #

1. Public Land Survey	T <u>46N</u>	R <u>13W</u>	<u>C3</u>
	T <u>46N</u>	R <u>13W</u>	<u>D3</u>
	T _____	R _____	_____
	T _____	R _____	_____
2. Property Controlling in Section	S _____	T _____	R _____
	S _____	T _____	R _____
3. Miscellaneous Property in Sec.	S _____	T _____	R _____
	S _____	T _____	R _____

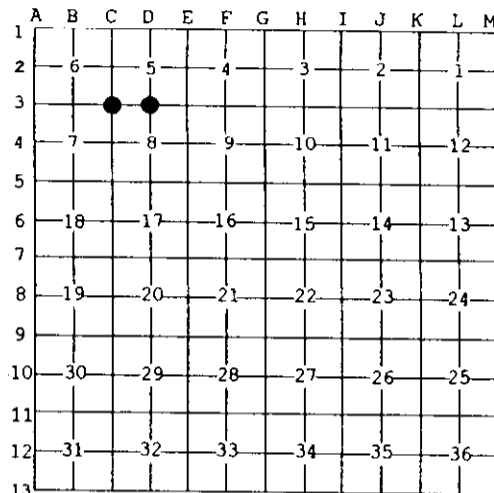
Register of Deeds Stamp & File Number

4. Lot No. _____, Recorded Plat _____
 5. Private Claims _____

D3 Nov 25 2002
 C3 Nov 07 2002

I, Stephan J. Szyszkoski, in a field survey on _____, 19____ do hereby state that under requirements of P.A. 74, Michigan P.A. of 1970, the corner points mentioned in lines 1 and 2 above were in conformance with regulations and rules therefore as required in the current manual of survey instructions of the United States Department of the Interior, Bureau of Land Management or by a decree of a Court of Law and /or that the corner points mentioned in lines 3, 4 and 5 above were in conformance with the rules of the Michigan Board of Land Surveyors or by a Decree of a Court of Law; established, re-established, monumented, recovered, found as expressed below:

NOTE: Not more than 2 corners, all in the same town and range, may be recorded on this certificate.



A. Description of original monument and accessories and/or subsequent restoration:

(C3) Corner common to Sections 5-6-7-8. 1961: Reestablished by double proportionate measurement by Billy D. Buckler RLS. 1" pipe with 4" brass cap. 3" Tamarack N50W 15 links, 3" B.Spruce S85E 4.5 links.
 (D3) Quarter corner common to Sections 5-8. 1960: Remonumented by Billy D. Buckler: This corner was replaced at a small squared W. Pine stub. Found no evidence of original corner. Found old stake on ground near corner. 1" pipe with 4" brass cap. 24" W. Pine stump S3E 49 links, 24" W. Pine stump N85E 67 links, 30" W. Pine stump N26W 114.5 links.

B. Description of corner evidence found and/or method applied in restoring or reestablishing corner:

(C3) Recovered the 1961 monument disturbed, pushed over with cap broken off. The B.Spruce NBT is in place and in good condition. The Tamarack has been destroyed by trail construction. Placed a new monument at the 1961 position, judged to be at the base of the existing monument and record distance from the Spruce NBT. The 1961 pipe was left adjacent.
 (D3) Found the 1960 monument in good condition. The W. Pine stump NBT S3E is now ground level remains at record bearing and distance. The others are gone, probably burned away. An old squared post was found on the ground alongside the monument, badly burned. Distance to west checks with Buckler's record. Left the monument in place and made new witnesses.

C. Description of monument for corner and accessories established to perpetuate locating the position of the corner:

(C3) Set 1"IDx36" I.pipe with 4" dia. MDNR cap. Blazed, scribed, and set measuring nails in:	(D3) Found 1"ID I.pipe with 4" brass cap. Blazed, scribed, and set measuring nails in:
6" Spruce S62E 2.95' "S8" *	12" R.Pine N46E 158.6' "1/4S NBT"
6" Spruce N19E 38.85' "S5 NBT"	12" twin Oak N60E 201.55' do
4" Tamarack N48W 41.25' "S6 NBT"	10" R.Pine N77E 160.2' do
4" Spruce S48W 24.75' "S7 NBT"	8" R.Pine S16E 216.55' do
Placed cedar post adjacent. Bearings are magnetic. Distances are to nail with tag. * denotes 1961 NBT	Bearings are magnetic. Distances are to nail with tag. Placed cedar post adjacent. * denotes 1960 NBT.



Signed by Stephan J. Szyszkoski
 Surveyor's Michigan License No. 33986

Date 12/3/02