

MICHIGAN
DEPARTMENT OF CONSERVATION
FORESTRY DIVISION

LAND CORNER RECORD

T. 46 N.R. 14 & 15W

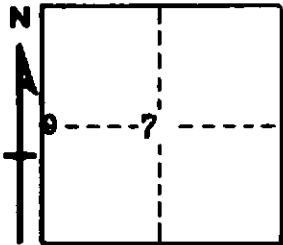
Schoolcraft COUNTY

DESCRIPTION OF CORNER 1/4 Cor. for Sec. 12, T46N R15W, and Sec. 7, T46N R14W.

CORNER MONUMENT 1" Iron pipe with 4" Brass Cap.

DATE MONUMENT PLACED AND WITNESSED 6-9-63

WITNESSES TO CORNER..... 7" Jack Pine (1/4 S.) (N.B.T.) S. 73° W., 55 1/2 lks.



7" Jack Pine (1/4 S.) (N.B.T.) S. 49° E., 36 lks.

AND

CIRCLE CORNER REGISTERED

DESCRIPTION IN DETAIL AS TO HOW CORNER WAS LOCATED AND IDENTIFIED OR RESTORED.

This Corner was placed midway and on Line bet. Sec. Cors.

No evidence of Original Cor.

SURVEYOR'S SEAL

SIGNED Billy O. Buckler DATE 1/7/64
REGISTERED LAND SURVEYOR