

LAND CORNER RECORDATION CERTIFICATE
Filing Requirement of Act 74, Mich. P.A. 1970

For corners in
Schoolcraft

(County)

Located In:

Corner Code #

1. Public Land Survey

T ___ R ___
T ___ R ___
T ___ R ___
T ___ R ___

2. Property Controlling
in Section

S17 T46N R 15W 15
S17 T46N R 15W 14

3. Miscellaneous
Property in Sec.

S ___ T ___ R ___
S ___ T ___ R ___

Register of Deeds Stamp & File Number

4. Lot No. _____, Recorded Plat _____

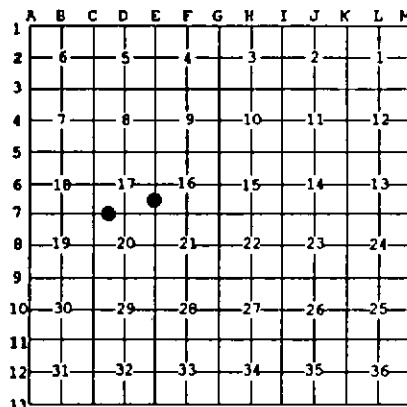
5. Private Claims _____

14 Apr 23 1998

15 Apr 22 1998

I, Stephan J. Szyszkoski, in a field survey on _____, 19____ do hereby state that under requirements of P.A. 74, Michigan P.A. of 1970, the corner points mentioned in lines 1 and 2 above were in conformance with regulations and rules therefore as required in the current manual of survey instructions of the United States Department of the Interior, Bureau of Land Management or by a decree of a Court of Law and for that the corner points mentioned in lines 3, 4 and 5 above were in conformance with the rules of the Michigan Board of Land Surveyors or by a Decree of a Court of Law, established, re-established, monumented, recovered, found as expressed below:

NOTE: Not more than 2 corners, all in the same town and range, may be recorded on this certificate.



A. Description of original monument and accessories and/or subsequent restoration:
(15 - Sec. 17) West 1/16 corner between Sections 17-20. Corner not established in the original survey. Found no subsequent record.
(14 - Sec. 17) South 1/16 corner between Sections 16-17. Corner not established in the original survey. Found no subsequent record.

B. Description of corner evidence found and/or method applied in restoring or reestablishing corner:

(15-Sec. 17) Found no evidence of prior monumentation at the corner position. Established the corner midway and on a line of mean true bearing between Section corner 1327.95' West and Quarter corner 1327.95' East. At the position for the corner, I placed a 1" ID x 36" iron pipe capped with a 4" dia. cast aluminum MDNR tablet, appropriately stamped. Corner placed and witnessed by T.Stark and M.Feldpausch, Newberry District Office.

(14-Sec. 17) Found no evidence of prior monumentation at the corner position. Established the corner midway and on a line of mean true bearing between Quarter corner 1318.79' North and Section corner 1318.79' South. At the position for the corner I placed a 1" ID x 36" iron pipe capped with a 4" dia. cast aluminum MDNR tablet, appropriately stamped. Corner placed and witnessed by T.Stark and M.Feldpausch, Newberry District Office.

C. Description of monument for corner and accessories established to perpetuate locating the position of the corner:

(15) Set 1" pipe with 4" MDNR cap. Blazed, scribed, and set measuring nails in the following:

5" W. Birch S44E 22.9' "N1/16 BT"
5" W. Birch S87W 56.15' "N1/16 BT"
6" W. Birch N82W 53.7' "N1/16 BT"
3" W. Birch N25W 18.7' "N1/16 BT"

Placed a 3" squared and scribed post adjacent. Bearings are magnetic.

(14) Set 1" pipe with 4" MDNR cap. Blazed, scribed, and set measuring nails in the following:

4" Maple S50E 8.75' "S1/16 BT"
12" Maple S40W 8.1' "S1/16 BT"
2" Maple S22W 22.6' "S1/16 BT"
2" Maple S50E 22.8' "S1/16 BT"

Placed a 4" squared and scribed cedar post adjacent. Bearings are magnetic.



Signed by Stephan J. Szyszkoski
Surveyor's Michigan License No. 33986

Date 7/29/98

For the Michigan Department of Natural Resources - Forest Management Division