

LAND CORNER RECORDATION CERTIFICATE  
Filing Requirement of Act 74, Mich. P.A. 1970

For corners in  
Schoolcraft

(County)

Located In:

Corner Code #

1. Public Land Survey

T 46H R 15W C7  
T 46H R 15W E7

2. Property Controlling  
in Section

S T R  
S T R

3. Miscellaneous  
Property in Sec.

S T R  
S T R

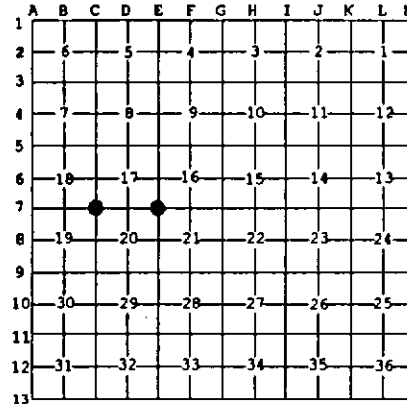
Register of Deeds Stamp & File Number

4. Lot No. \_\_\_\_\_, Recorded Plat \_\_\_\_\_  
5. Private Claims \_\_\_\_\_

Apr 20 1998

I, Stephan J. Szyszkoski, in a field survey on \_\_\_\_\_, 19\_\_\_\_ do hereby state that under requirements of P.A. 74, Michigan P.A. of 1970, the corner points mentioned in lines 1 and 2 above were in conformance with regulations and rules therefore as required in the current manual of survey instructions of the United States Department of the Interior, Bureau of Land Management or by a decree of a Court of Law and for that the corner points mentioned in lines 3, 4 and 5 above were in conformance with the rules of the Michigan Board of Land Surveyors or by a Decree of a Court of Law; established, re-established, monumented, recovered, found as expressed below:

NOTE: Not more than 2 corners, all in the same town and range, may be recorded on this certificate.



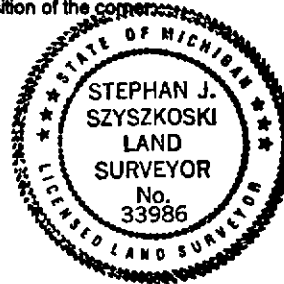
- A. Description of original monument and accessories and/or subsequent restoration:  
(C7) Corner common to Sections 17-18-19-20. Original corner perpetuated in 1961 by Billy D. Buckler, RLS: "This corner was replaced from 2 tamarack B.T.'s (Tamarack 10" N19W 22 links and Tamarack N61E 08 links). The latter seems to err in distance which should be 33 links if Bearings are to remain correct." Corner monument: 1" iron pipe with 4" brass cap. Witnesses to corner: 7" Black Ash N25E 10.5 links, 9" Cedar S54W 21 links".  
(E7) Corner common to Sections 16-17-20-21. Original corner perpetuated in 1959 by Billy D. Buckler, RLS: "This corner was replaced from Hemlock B.T. bearing SE of corner. Stump in poor condition. Found scribe marks plain, also found Yellow Birch to NW of corner, down and rotted badly. Corner monument: 1" pipe with 4" brass cap. Witnesses to corner: 12" Sugar Maple N14W 32 links, 6" Sugar Maple S27W 35 links, 12" Hemlock N30E 60 links".

B. Description of corner evidence found and/or method applied in restoring or reestablishing corner:

- (C7) Recovered the 1961 monument as described, a 1" I.D. iron pipe capped with a 4" dia. brass MI Dept. of Conservation tablet, in good condition, and at record bearing and distance from the remaining 1961 witness Cedar, also in good condition. The Black Ash was not recovered. The original Tamaracks were also not recovered due to snow cover. Left the monument in place and marked three new accessories as described below. Corner recovered and rewitnessed by T.Stark and M.Feldpausch, Newberry District Office.  
(E7) Recovered the 1959 monument as described, a 1" ID iron pipe capped with a 4" dia. brass MI Dept. of Conservation tablet, in good condition, and at record bearing and distance from the remaining 1959 witness Sugar Maple (good condition), and the cut stump remains of the Sugar Maple SW and Hemlock NE. Left the monument in place and marked three new accessories as described below. Corner recovered and rewitnessed by T.Stark and M.Feldpausch, Newberry District Office.

C. Description of monument for corner and accessories established to perpetuate locating the position of the corner:

- |  |  |
|--|--|
| (C7) Found 1" pipe with 4" brass cap.<br>Blazed, scribed, and set measuring nails in the following:<br>14" Cedar S52W 12.6' The 1961 wit.<br>10" Cedar N85W 26.35' "S18 NBT"<br>6" Cedar N35W 31.1' "S18 NBT"<br>4" Cedar N19E 16.9' "S17 NBT"<br>Placed 3" squared cedar post adjacent.<br>Bearings are magnetic. | (E7) Found 1" pipe with 4" brass cap.<br>Blazed, scribed, and set measuring nails in the following:<br>18" Sugar N12W 21.35' 1959 witness<br>14" Maple N26E 10.5' "S16 NBT"<br>6" Hemlock N25W 22.05' "S17 NBT"<br>10" Maple N89W 24.2' "S17 NBT"<br>Placed a 4" squared and scribed post adjacent. Bearings are magnetic. |
|--|--|



Signed by Stephan J. Szyszkoski Date 7/29/98  
Surveyor's Michigan License No. 33986

For the Michigan Department of Natural Resources - Forest Management Division