

MICHIGAN
DEPARTMENT OF CONSERVATION
FORESTRY DIVISION

LAND CORNER RECORD

T. 47N N.R. 13W

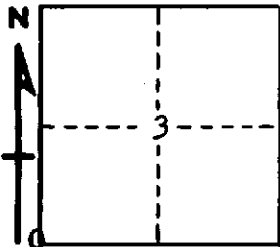
Schoolcraft COUNTY

DESCRIPTION OF CORNER Sec. Cor. common to Secs. 3-4-9-10

CORNER MONUMENT 1" pipe with 4" aluminum cap

DATE MONUMENT PLACED AND WITNESSED 10-6-70

WITNESSES TO CORNER..... 36" W. Pine stub (NBT) S40°E 85.7'



48" W. Pine stump (NBT) N40°E 36.8'

AND

CIRCLE CORNER REGISTERED

DESCRIPTION IN DETAIL AS TO HOW CORNER WAS LOCATED AND IDENTIFIED OR RESTORED.

This corner replaced from one probable witness; a Hemlock, down and in poor condition, bearing S51°W, 49 lks.
Position checks well with good corner; ½ mile East; ½ mile south and one mile North.

SURVEYOR'S SEAL

SIGNED Billy D. Buckler
Billy D. Buckler
REGISTERED LAND SURVEYOR

DATE 10-19-70