

MICHIGAN  
DEPARTMENT OF CONSERVATION  
FORESTRY DIVISION



# LAND CORNER RECORD

T. 47N N.R. 13W

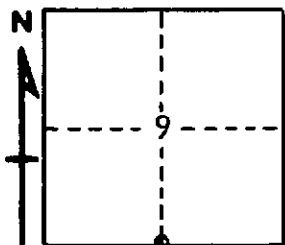
Schoolcraft COUNTY

DESCRIPTION OF CORNER ¼ Cor. bet. Secs. 9-16

CORNER MONUMENT 1¼" x 30" iron pipe, buried in west shoulder of road.

DATE MONUMENT PLACED AND WITNESSED 6" Soft Maple (¼S NBT) S72°W

WITNESSES TO CORNER..... 6" Soft Maple (¼S NBT) S72°W 18.2'



10" Hard Maple (¼S NBT) N37°W 39.9'

AND

CIRCLE CORNER REGISTERED

DESCRIPTION IN DETAIL AS TO HOW CORNER WAS LOCATED AND IDENTIFIED OR RESTORED.

Wood location post, west of CL of highway M-77.

This corner placed midway between two Sec. Cors. and in line with a wood post, apparently set as a location post to west of road. Found old squared corner post on ground, appears to have been removed when highway shoulder was widened.

SURVEYOR'S SEAL

SIGNED Billy D. Buckler  
BILLY D. BUCKLER  
REGISTERED LAND SURVEYOR

DATE 10-20-70