

LAND CORNER RECORDATION CERTIFICATE  
Filing Requirement of Act 74, Mich. P.A. 1970

For corners in  
Schoolcraft  
(County)

Located in: \_\_\_\_\_ Corner Code # \_\_\_\_\_

1. Public Land Survey  
T 47N R 13W C8  
T 47N R 13W C7  
T \_\_\_\_\_ R \_\_\_\_\_  
T \_\_\_\_\_ R \_\_\_\_\_

2. Property Controlling in Section  
S \_\_\_\_\_ T \_\_\_\_\_ R \_\_\_\_\_  
S \_\_\_\_\_ T \_\_\_\_\_ R \_\_\_\_\_

3. Miscellaneous Property in Sec.  
S \_\_\_\_\_ T \_\_\_\_\_ R \_\_\_\_\_  
S \_\_\_\_\_ T \_\_\_\_\_ R \_\_\_\_\_

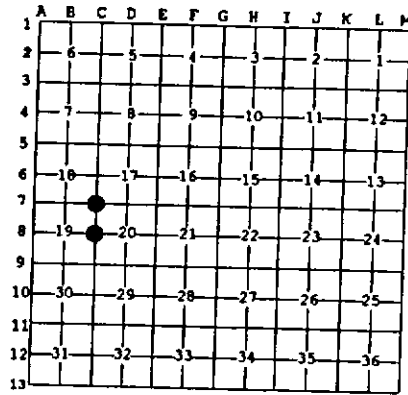
Register of Deeds Stamp & File Number

4. Lot No. \_\_\_\_\_, Recorded Plat \_\_\_\_\_  
5. Private Claims \_\_\_\_\_

May 21 1996

I, Stephan J. Szyszkoski, in a field survey on \_\_\_\_\_, 19\_\_\_\_ do hereby state that under requirements of P.A. 74, Michigan P.A. of 1970, the corner points mentioned in lines 1 and 2 above were in conformance with regulations and rules therefore as required in the current manual of survey instructions of the United States Department of the Interior, Bureau of Land Management or by a decree of a Court of Law and for that the corner points mentioned in lines 3, 4 and 5 above were in conformance with the rules of the Michigan Board of Land Surveyors or by a Decree of a Court of Law, established, re-established, monumented, recovered, found as expressed below.

NOTE: Not more than 2 corners, all in the same town and range, may be recorded on this certificate.



A. Description of original monument and accessories and/or subsequent restoration:  
 (C8) Quarter corner common to Sections 19-20. Corner monumented in 1955 by Billy D. Buckler, RLS, from an original BT. Corner monumented with a 1" pipe with 4" brass cap and the following: 26" White Pine stub S78W 81 links, 40" White Pine stump S60E 29 links.  
 (C7) Corner common to Sections 17-18-19-20. Corner monumented in 1955 by Billy D. Buckler, RLS, from an original BT. Corner monumented with a 1" pipe with 4" brass cap and the following: 20" W. Pine Stp. S21E 51 links, 20" W. Pine Stp. N05 65 links.

B. Description of corner evidence found and/or method applied in restoring or reestablishing corner:  
 (C8) Recovered the 1955 monument, as described, in good condition, and at record bearing and distance from 40" W. Pine stump witness. The 26" W. Pine stub has burned. Left the monument in place and marked three new accessories as described below. Corner re-witnessed by T. Stark and D. Lampela, Newberry.  
 (C7) Found the 1955 monument, as described, in good condition, and at record bearing and distance from the 20" White Pine stump S21E. Scribe marks still visible. The second witness is now rotting away. Left the monument in place and marked three new accessories as described below. Corner re-witnessed by T. Stark and D. Lampela, Newberry.

C. Description of monument for corner and accessories established to perpetuate locating the position of the corner:  
 (C8) Found 1" pipe with 4" brass cap. Blazed, scribed, and set measuring nails in the following:  
 8" R. Pine S56W 45.2' 1/4S NBT"  
 10" R. Pine S36W 99.2' 1/4S NBT"  
 6" Jack Pine N43W 79.2' 1/4S NBT"  
 Placed a 5" squared cedar post adjacent. Bearings are magnetic.  
 (C7) Found 1" pipe with 4" brass cap. Blazed, scribed, and set measuring nails in the following:  
 7" J. Pine S64W 13.15' S19 NBT"  
 8" J. Pine S16E 34.85' S20 NBT"  
 10" R. Pine S37W 46.05' S19 NBT"  
 Placed a 5" squared and scribed cedar post adjacent. Bearings are magnetic.



Signed by Stephan J. Szyszkoski Date 6/25/96  
Surveyor's Michigan License No. 33986

For the Michigan Department of Natural Resources - Forest Management Division