

LAND CORNER RECORDATION CERTIFICATE
Filing Requirement of Act 74, Mich. P.A. 1970

For corners in Schoolcraft <small>(County)</small>	Located in:	Corner Code #
1. Public Land Survey	T 47N R 13W	A8
	T 47N R 13W	A7
	T R	
	T R	
2. Property Controlling in Section	S T R	
	S T R	
3. Miscellaneous Property in Sec.	S T R	
	S T R	

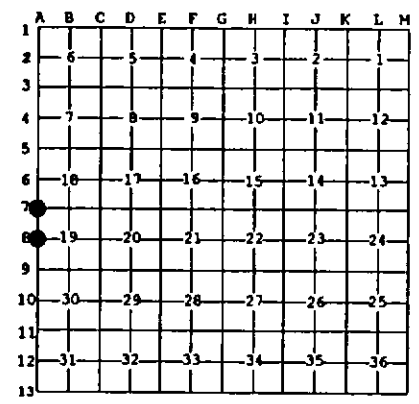
Register of Deeds Stamp & File Number

4. Lot No. _____, Recorded Plat _____
5. Private Claims _____

May 21 1996

I, Stephan J. Szyszkoski, in a field survey on _____, 19____ do hereby state that under requirements of P.A. 74, Michigan P.A. of 1970, the corner points mentioned in lines 1 and 2 above were in conformance with regulations and rules therefore as required in the current manual of survey instructions of the United States Department of the Interior, Bureau of Land Management or by a decree of a Court of Law and for that the corner points mentioned in lines 3, 4 and 5 above were in conformance with the rules of the Michigan Board of Land Surveyors or by a Decree of a Court of Law; established, re-established, monumented, recovered, found as expressed below:

NOTE: Not more than 2 corners, all in the same town and range, may be recorded on this certificate.



A. Description of original monument and accessories and/or subsequent restoration:
(A8) Quarter corner common to Sections 19 T47NR13W and 24 T47NR14W. Corner reestablished by proportionate measurement in 1959 by Billy D. Buckler, RLS. Corner monumented with a 1" pipe with 4" brass cap and the following: 15" Red Pine S48W 122 links, 18" Red Pine N56W 182 links.
(A7) Corner common to Sections 18-19 T47NR13W and 13-24 T47NR14W. Corner reestablished in 1959 by Billy D. Buckler, RLS, at the position of a found wood stake. Corner monumented with a 1" pipe with 4" brass cap and the following: 26" W. Pine S69W 115 links, 17" R. Pine N52E 112 links, 16" R. Pine S84E 130 links.

B. Description of corner evidence found and/or method applied in restoring or reestablishing corner:
(A8) Recovered the 1959 monument as described, in good condition, and at record bearing and distance from the 1959 witnesses. Both 1959 NBTs are dead. The 18" is still standing with scribe marks visible. The 15" is dead and down. Left the monument in place and marked 4 new accessories as described below. Corner re-witnessed by T.Stark and D.Lampela, Newberry.
(A7) Found the 1959 monument as described, in good condition, and at record bearing and distance from the 1959 witnesses, all in good condition. Set measuring nails in the 1959 trees, and marked one new accessory as described below. Corner re-witnessed by T.Stark and D.Lampela, Newberry.

C. Description of monument for corner and accessories established to perpetuate locating the position of the corner:
(A8) Found 1" pipe with 4" brass cap. Blazed, scribed, and set measuring nails in the following:
4" W. Pine N13E 14.05' "1/4S NBT"
12" W. Pine N59W 17.45' "1/4S NBT"
12" W. Pine S66E 9.55' "1/4S NBT"
8" W. Pine S28W 11.15' "1/4S NBT"
Placed a squared and scribed cedar post adjacent. Bearings are magnetic.
(A7) Found 1" pipe with 4" brass cap. Blazed, scribed, and set measuring nails in the following 1959 NBTs:
30" W. Pine S69W 76.0' "S24"
22" R. Pine N52E 74.2' "S18"
22" R. Pine S84E 86.55' "S19"
(Bearings taken from 1959 record)
New witness:
5" J. Pine S44E 23.7' "S19 NBT"
Placed a squared and scribed cedar post adjacent. Bearings are magnetic.



Signed by Stephan J. Szyszkoski Date 6/25/96
Surveyor's Michigan License No. 33986