

LAND CORNER RECORDATION CERTIFICATE  
Filing Requirement of Act 74, Mich. P.A. 1970

SECTION  
For corners in

<u>Shiawassee</u> (County)	Located in:	Corner Code #
1. Public Land Survey	T <u>6N</u> R <u>1E</u>	<u>L-7</u>
	T _____ R _____	_____
	T _____ R _____	_____
2. Property Controlling In Section	S _____ T _____ R _____	_____
	S _____ T _____ R _____	_____
3. Miscellaneous Property in Sec.	S _____ T _____ R _____	_____
	S _____ T _____ R _____	_____
4. Lot No. _____	Recorded Plat _____	_____
5. Private Claims _____	_____	_____



3026114  
Page: 1 of 1  
10/05/1999 02:19P  
L-1 P-307

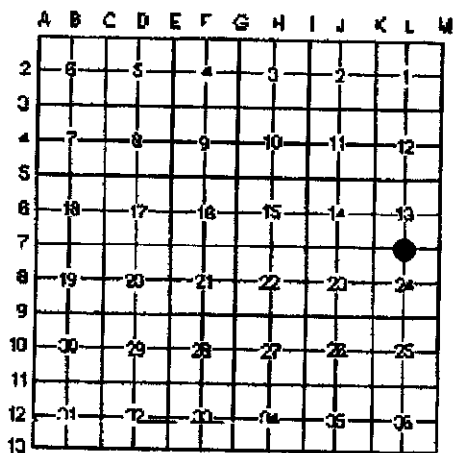
Register of Deeds Stamp  
& File Number

I, Mark L. VanRaemdonck, in a field survey on February 19, 1999, do hereby certify that under requirements of P.A. 74, Michigan P.A. of 1970, the corner points mentioned in lines 1 and 2 above were in conformance with regulations and rules therefore as required in the current manual of survey instructions of the United States Department of the Interior, Bureau of Land Management or by a decree of a Court of Law and/or that the corner points mentioned in lines 3, 4 and 5 above were in conformance with the rules of the Michigan Board of Land Surveyors or by a Decree of a Court of Law, established, re-established, monumented, re-monumented, recovered, found as expressed below:

NOTE: Not more than 2 corners, all in the same town and range, may be recorded on this certificate.

A. Description of original monument and accessories and/or subsequent restoration:

- 1. Original, Joseph Wampler, D.S. 1826  
Mon: Wood Post  
Accessories: W. Oak 18 N30°W 3LKS  
B. Oak 38 N35°E 17LKS
- 2. Shiawassee County Road Commission Book No. 7, page 116-125. Surveyor and date not given.  
Mon: Not specified.  
Accessories: NE and NW corners of Section 24.



APPROVED

County Remonumentation  
Peer Review Group

1 OCT 99  
NCL

B. Description of corner evidence found and/or method applied in restoring or re-establishing corner:

Original monument and accessories have been obliterated. The survey mentioned in No. 2 above is a centerline survey for Brewer Road and gives stationing at NW corner, N 1/4 and NE corner of Section 24, and a deflection angle at the N 1/4 corner. I re-established the location of corner L-7 using proportional measurements to the stationing and by retracing the centerline based on the bearings and deflections excavation at this location produced no further evidence. This location is in the approximate centerline of the existing gravel surface and in line with an old tree and fence line running North. I found no conflicting evidence. I accepted this location as the original corner position based on the best available evidence.

C. Description of monument for corner and accessories to perpetuate locating the position of the corner:

Set a standard Shiawassee County Harrison marker monument in a monument box, at the location described in Section B. The monument is stamped "Remon P.S. 24622" and is witnessed by the following accessories:

- |              |                        |            |
|--------------|------------------------|------------|
| N05°W 42.51' | N&C in E face 12" Ash  |            |
| North 44.03' | N&C in E. face 8" Ash  |            |
| N10°E 55.42' | N&C in E. face 14" Oak |            |
| N45°E 51.65' | N&C in NW face 6" Pine |            |
| South 1.0'   | CL of new pav't        |            |
| S88°52'00"W  | 2663.20'               | Corner K-7 |
| N89°06'51"E  | 2669.79'               | Corner M-7 |



Signed by Mark L. VanRaemdonck  
Surveyor's Michigan License No. 24622

Date SEPT. 23, 1999