

LAND CORNER RECORDATION CERTIFICATE
Filing Requirement of Act 74, Mich. P.A. 1970

SURVEY &
EMONUMENTATION

For corners in

JAN 16 2001

SECTION

Shiawassee Located in: Corner Code #
(County)

1. Public Land Survey T 6N R 2E L-7
T R
T R
T R

2. Property Controlling S T R
In Section S T R

3. Miscellaneous S T R
Property in Sec. S T R

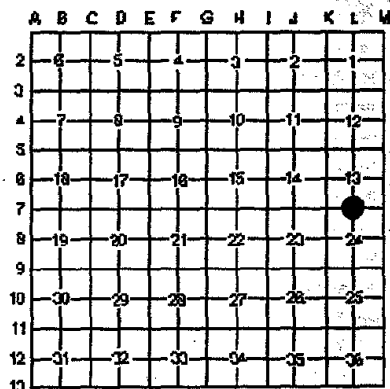
4. Lot No. Recorded Plat

5. Private Claims

Register of Deeds Stamp
& File Number

I, Mark L. VanRaemdonck, in a field survey on, February 8, 2000, do hereby certify that under requirements of P.A. 74, Michigan P.A. of 1970, the corner points mentioned in lines 1 and 2 above were in conformance with regulations and rules therefore as required in the current manual of survey instructions of the United States Department of the Interior, Bureau of Land Management or by a decree of a Court of Law and/or that the corner points mentioned in lines 3, 4 and 5 above were in conformance with the rules of the Michigan Board of Land Surveyors or by a Decree of a Court of Law, established, re-established, monumented, re-monumented, recovered, found as expressed below:

NOTE: Not more than 2 corners, all in the same town and range, may be recorded on this certificate.



A. Description of original monument and accessories and/or subsequent restoration:

1.) Original Joseph Wampler, D.S. April 1826.
Monument: Wood post
Accessories: W. Oak 24 S87E 24
Do 23 N42W 4
Distance on line between Section 13 and 24 was 81.60 chains (5379 feet) with the quarter line being set at 40.75 chains (2689.50 feet).
Found no other record of this corner.

B. Description of corner evidence found and/or method applied in restoring or re-establishing corner:

In a search of the apparent corner location we found a rotted-off anchor post with fence and tree lines running North, South, East and West. From the anchor post we measured East 2724.55 feet to corner M-7 and West 2668.24 feet to corner K-7. Differences between GLO distance and measured distances are: West, 2689.5-2668.24=21.26; and East, 2689.5-2724.55=-35.05. If we assume that Wampler made a half-chain error in locating the 144 post, his distances would have been: West, 2656.5 feet and East 2722.5. The differences are: West, 2656.5-2668.24=-11.74 and East 2722.5-2724.55=-2.05. The North and South 1/8 line fence in the Southwest 1/4 of Section 13 is within 2 feet of the split of the distance between corner K-7 and anchor post. The North and South 1/8 line fence in the Northeast 1/4 of Section 24, T6N-R2E is 8.60 feet East of midway between the anchor post and corner M-7. I accepted the location of the anchor post as the original corner position based on the best available evidence.

C. Description of monument for corner and accessories to perpetuate locating the position of the corner:

Removed a portion of the anchor post and installed a standard Shiawassee County harrison marker monument over the remaining portion of the base of the post. The marker is stamped "REMON PS 24622" and is witnessed by the following accessories:

- North 11.93' Set Nail & Tag #24622 in the West face of 14" Hickory
- West 7.52' Set Nail & Tag #24622 in the South face of 14" Oak
- S10°W 8.08' Set Nail & Tag #24622 in the East face of 24" Oak
- N80°E 23.52' Set Nail & Tag #24622 in the South face of 8" Oak

APPROVED

County Remonumentation
Peer Review Group

*NCL
13 NOV 00*

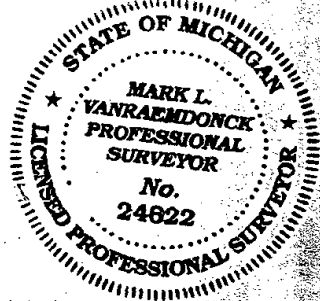
Date Nov. 10, 2000

Signed by Mark L. VanRaemdonck

Surveyor's Michigan License No. 24622

FORM APPROVED BY MICHIGAN STATE BOARD OF LAND SURVEYORS JAN 16, 1971

REVISED MAY 14, 1975
REVISED JAN. 1983



3043889
Page 1 of 1
11/17/2000 09:33A
L-1 P-342