

**SURVEY &  
REMONUMENTATION**

NOV 10 1997

**LAND CORNER RECORDATION CERTIFICATE  
Filing Requirement of Act 74, Mich. P.A. 1970**

RECORDED

97 NOV -6 PM 2:38

COMMISSION

For corners in

Shiawassee Located in: Corner Code #  
(County)

1. Public Land Survey T\_6N R\_3E L-9  
T R  
T R  
T R

2. Property Controlling S T R  
In Section S T R

3. Miscellaneous S T R  
Property in Sec. S T R

REGISTER OF DEEDS  
*Hayes*  
SHIAWASSEE COUNTY, MICH.

Register of Deeds Stamp & File Number

4. Lot No. \_\_\_\_\_, Recorded Plat \_\_\_\_\_  
5. Private Claims \_\_\_\_\_

I, Mark L. VanRaemdonck, in a filed survey on March 21, 1997, do hereby certify that under requirements of P.A. 74, Michigan P.A. of 1970, the corner points mentioned in lines 1 and 2 above were in conformance with regulations and rules therefore as required in the current manual of survey instructions of the United States Department of the Interior, Bureau of Land Management or by a decree of a Court of Law and/or that the corner points mentioned in lines 3, 4 and 5 above were in conformance with the rules of the Michigan Board of Land Surveyors or by a Decree of a Court of Law, established, re-established, monumented, re-monumented, recovered, found as expressed below:

NOTE: Not more than 2 corners, all in the same town and range, may be recorded on this certificate.

A. Description of original monument and accessories and/or subsequent restoration:

- Original: J. Mullett, DS 1823  
Mon: Not Set Corner Falls in River  
GLO distance K-9 to M-9 = 79.88 Chains  
(5272.08 feet 79.88 = 39.94, 2636.04 feet)
- Andrew Huggins, County Surveyor, Book B, Page 19, may 22, 1849  
Mon: Quarter post is in river  
Access: Lynn 16 East 11 LKS
- F. A. Gould, County Surveyor, Field Book 12, P. 113, June, 1949  
Intersection S. line Sec. 24 and East bank of river  
Mon: 1" Iron Pipe 2 1/2' Long  
Access: Elm 20" S5°W 18.40  
Hick 12" East 34.10  
Hard Maple 33" N10°E 60.80
- Mark L. VanRaemdonck, Cert. Survey, Rec. L. 3, P. 52, 7/11/1978  
Mon: Corner fall in river  
Access: P. K. nail at intersection of centerline of Lansing Road and North & South 1/4 line Section 24  
N01°18'27"E 360.00 feet established from survey by F. Gould Rec. in his Field Book 12, page 112-113.

A	B	C	D	E	F	G	H	I	J	K	L	M
2	6	5	4	3	2	1						
3												
4	7	8	9	10	11	12						
5												
6	13	17	16	15	14	13						
7												
8	19	20	21	22	23	24						
9												
10	25	29	28	27	26	25						
11												
12	31	32	33	34	35	36						
13												

**APPROVED**  
County Remonumentation  
Peer Review Group  
NCC  
31 OCT 97



B. Description of corner evidence found and/or method applied in restoring or re-establishing corner:

Found pipe on North line of Section 25 on East Bank of Shiawassee River as described by F. A. Gould in No. 3 held for control of North line of Section 25 from corner M-9. I established the position of corner L-9 on the line between the Gould Iron and corner M-9 extended West at a point midway between corners M-9 and K-9. This location is in the Shiawassee River. I accepted this location as the careful & faithful re-establishment of the original corner position.

C. Description of monument for corner and accessories to perpetuate locating the position of the corner

The corner location as re-established was not monumented. The corner location is referenced by the following:

S 88°54'33" W	281.24'	Set Rod & Cap #24622 on North line of Sec. 25 at the centerline of Lansing Road.
N 3°44'10" E	353.81'	Set Rod & Cap #24622 on the centerline of Lansing Road.
N 88°59'58" E	47.80'	Found 1" Iron Pipe on East Bank of River on North line of Sec. 25 by F. A. Gould June, 1949. Book 12, P. 113.
S 88°54'33" W	2637.82'	Harrison Marker at corner K-10, T6N-R3E.
N 88°59'58" E	2637.82'	Harrison Marker at corner M-10, T6N-R3E.

\*See sketch on reverse side.

Signed by Mark L. VanRaemdonck

Date OCT. 30, 1997

Surveyor's Michigan License No. 24622

FORM APPROVED BY MICHIGAN STATE BOARD OF LAND SURVEYORS JAN 18, 1971  
REVISED MAY 14, 1975  
REVISED JAN., 1983

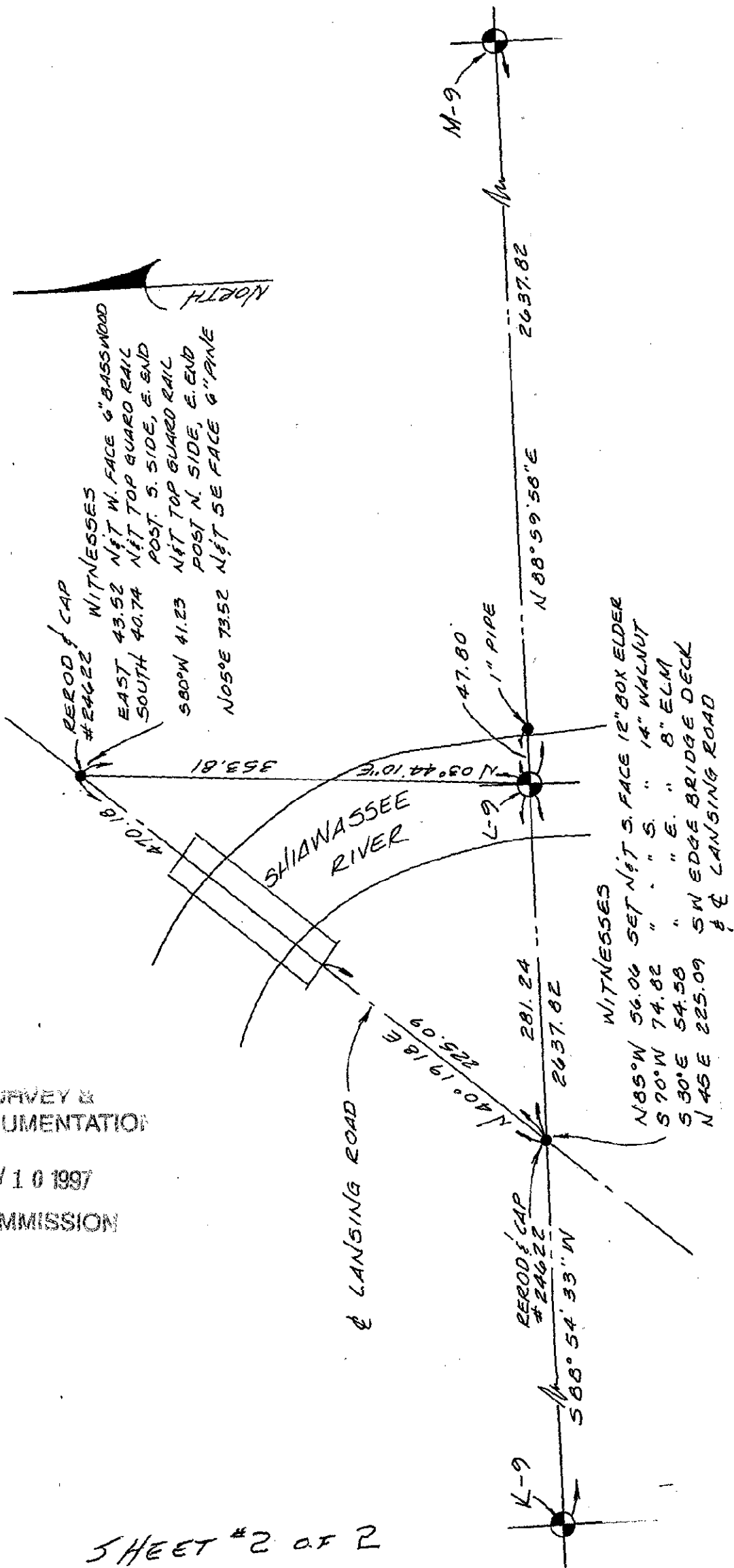
SHEET #1 OF 2

**LIBER** - 1B PG 236

SURVEY &  
REMONUMENTATION

NOV 10 1997

COMMISSION



SHEET #2 OF 2

INDEX PG 237