

LAND CORNER RECORDATION CERTIFICATE
 Filing Requirement of Act 74, Mich. P.A. 1970

SURVEY &
 REMONUMENTATION

For corners in

Located in:

Corner Code #

Shiawassee
 (County)

NOV 03 1998

SECTION

1. Public Land Survey

T 8N R 1E

K-10

2. Property Controlling
 In Section

S T R

3. Miscellaneous
 Property in Sec.

S T R

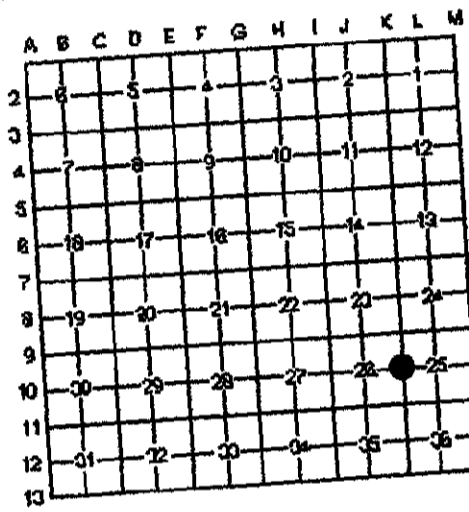
4. Lot No.

S T R

5. Private Claims

S T R

Register of Deeds Stamp
 & File Number



I, Mark L. VanRaemdonck, in a field survey on June 16, 1998, do hereby certify that under requirements of P.A. 74, Michigan P.A. of 1970, the corner points mentioned in lines 1 and 2 above were in conformance with regulations and rules therefore as required in the current manual of survey instructions of the United States Department of the Interior, Bureau of Land Management or by a decree of a Court of Law and/or that the corner points mentioned in lines 3, 4 and 5 above were in conformance with the rules of the Michigan Board of Land Surveyors or by a Decree of a Court of Law, established, re-established, monumented, re-monumented, recovered, found as expressed below:

NOTE: Not more than 2 corners, all in the same town and range, may be recorded on this certificate.

A. Description of original monument and accessories and/or subsequent restoration:

- Original, R. Thomas, D.S., 1831
 Monument: Wood post
 Accessories: Sugar 4 N40°W 37
 Dc 5 S51°E 27
- Ezra Mason, February 24 & 25, 1871
 Monument: Not given
 Accessories: NE cor. of SH N89°W 105
- John F. Quine, LCRC recorded Liber 1, page 505, 3/11/75 (survey date 8/10/71)
 Monument: Set 6" RR spike, found old stakes at 1/2 post and Section corner to South extended line, double distance.
 Accessories: Concrete corner fence post, WNW, 42.8 feet telephone pole, W, 51.2 feet power pole, NE< 60.22 feet concrete corner fence post, E, 34.2 feet 1/2 post, S, 1320.55 feet Section corner, S, 2641.10 feet (to center of object unless otherwise noted).
- John F. Quine, Certified Survey, recorded Liber 6, page 885, July 6, 1994
 Monument: Found Iron T br in monument box
 Accessories: Refers to LCRC, recorded Liber 1, page 505

APPROVED

County Remonumentation
 Peer Review Group

NCC 7 OCT 98



B. Description of corner evidence found and/or method applied in restoring or re-establishing corner:

Found "T" iron in monument box. This location fit the remaining accessories described in No. 3 above. Found no evidence of original monument or accessories. Found no conflicting evidence. Accepted this location as the original corner position based on the best available evidence.

C. Description of monument for corner and accessories to perpetuate locating the position of the corner:

Replaced "T" iron with a standard Shiawassee County Harrison Marker stamped "Remon P.S. 24622". The marker is witnessed by the following accessories:

- | | |
|-------------|---|
| East 34.37 | Top. cen. conc. post |
| N80°W 51.07 | Nail & tag #24622 in N. face util. pole |
| N40°W 46.54 | Gould nail & tag in SE face util. pole |
| N30°E 60.00 | Cen. SE face util. pole |
| S00°39'24"E | 2641.74 Harrison marker at K-11 |
| N00°54'28"W | 2646.73 Harrison marker at K-9 |

Signed by

Mark L. VanRaemdonck

Surveyor's Michigan License No. 24622

Date SEPT. 8, 1998

FORM APPROVED BY MICHIGAN STATE BOARD OF LAND SURVEYORS

JAN 18, 1871
 REVISED MAY 14, 1975
 REVISED JAN., 1983



3007704
 Page: 1 of 1
 10/27/1998 03:22P

Kaye Grubba - Shiawassee Co.

REMON

Lb-1 Pg-257